

Historic, Archive Document

Do not assume content reflects current scientific knowledge, policies, or practices.

62.4

1928

LIBRARY

RECEIVED

★ FEB 25 1928 ★

U. S. Department of Agriculture



For Complete Description
See Page 20

GOLD MEDAL
Dahlia Flowered Zinnia
Price, Per Packet, 20c

Holland-American Seed Co.

Garden, Field and Flower Seeds

24 Fulton Street West

Grand Rapids, Michigan, U. S. A.



A Fine Lawn Grown From Our Fancy Mixed Lawn Grass Seed.

OUR POLICIES AND SERVICES

To Our Friends and Customers:

We take great pleasure in presenting you with this, our 1928 illustrated catalog and price list. We have taken great pains in its preparation and it is our hope that it will serve you faithfully.

We wish to thank our customers for the support they have given us during the past year, and hope that they will continue their pleasant relations with us. We will try at all times to give the best and most careful service which we can possibly render. It is our sincere desire to build our reputation on quality seeds, prompt service, and square dealing. We believe these are the chief factors in building up a successful business.

We especially solicit your mail orders. These will receive our most prompt and careful attention. We also urge you to send these orders in early.

You are assured of our most hearty co-operation in helping you solve any problem that may confront you, and we urge you to feel free to advise with us at any time.

Very respectfully yours,

HOLLAND-AMERICAN SEED COMPANY.

Non-Warranty

The seeds offered in this price list have been carefully grown, selected, cleaned and tested for germination and we believe them to be first class, but as so many conditions enter into making a crop, such as weather conditions, etc., of which we have no control, we give no warranty, either express or implied, as to description, purity or productiveness of any Seeds, Bulbs, or Plants we send out and will not be responsible for the crop. If the purchaser does not accept the goods on these terms, they are at once to be returned, and if paid for the money will be refunded.

BEANS

Dwarf Wax or Butter Beans

Sow in rows 2 to 3 feet apart, plant about 8 inches apart in the rows. Cover about 2 inches. One pound of seed will sow 100 feet of row; one bushel (60 lbs.), to the acre.

PENCIL POD BLACK WAX. This is a handsome black wax sort and is medium early; a good Bean for market gardeners whose trade is nearby and who desire a Bean of high quality. Pkt., 5c and 10c; lb., 30c; 2 lbs., 50c; 5 lbs., \$1.10; bu., \$11.00.

GOLDEN WAX. An old-time favorite. Pods are of medium length and of medium color. Bears in 45 to 50 days. Pkt., 5c and 10c; lb., 30c; 2 lbs., 50c; 5 lbs., \$1.10; bu., \$11.00.

DAVIS KIDNEY WAX. A very showy variety and is largely grown for the canning factories. It has a long, straight pod of beautiful waxy color. Splendid yielder. Pkt., 5c and 10c; lb., 30c; 2 lbs., 50c; 5 lbs., \$1.10; bu., \$11.00.

UNRIVALED WAX. This variety is becoming more popular every season. Pods are 5 to 5½ inches long, of a rich yellow color. Very tender and a great yielder. Pkt., 5c and 10c; lb., 30c; 2 lbs., 50c; 5 lbs., \$1.10; bu., \$11.00.

Dwarf Green Podded Varieties

These varieties are very rich in flavor and slightly hardier. Sow in rows 2 to 3 feet apart. Plant about 8 inches apart in the rows. Cover about 2 inches. One pound of seed will sow 100 feet of row; one bushel will sow an acre.

REFUGEE or 1000-to-1. Variety of excellent flavor and very prolific. It is a sure cropper and makes wonderful records. Crop matures in about 75 days. Pkt., 5c and 10c; lb., 30c; 2 lbs., 50c; 5 lbs., \$1.10; bu., \$11.00.

BURPEE'S STRINGLESS GREEN POD. Plants grow from 12 to 15 inches high, very erect and productive. Pods round and about 5 inches long, absolutely stringless and very tender. Pkt., 5c and 10c; lb., 30c; 2 lbs., 50c; 5 lbs., \$1.10; bu., \$11.00.

GIANT STRINGLESS GREEN POD. From its introduction it has been a favorite. Pods about 5 inches long, dark in color, very brittle and absolutely stringless. Pkt., 5c and 10c; lb., 30c; 2 lbs., 50c; 5 lbs., \$1.10; bu., \$11.00.

Pole Beans

Pole Beans require more care than Bush Beans, but bear for a longer period and are generally more productive. Plant hills 2 to 3 feet apart and 3 or 4 beans in every hill. One-half pound to 100 feet of row; 30 pounds to the acre.

DUTCH CASEKNIFE (Snyboonen). The most prolific white-seeded Pole Bean. It bears white, kidney-shaped beans and is one of the best for Winter use. Pkt., 5c and 10c; lb., 30c; 2 lbs., 50c; 5 lbs., \$1.25; bu., \$13.00.

KENTUCKY WONDER. Long, thick, meaty pods, with deeply saddled back. Entirely stringless. Pkt., 5c and 10c; lb., 30c; 2 lbs., 50c; 5 lbs., \$1.25; bu., \$13.00.

Lima Beans

BURPEE'S BUSH LIMA. Beans are large and of excellent quality. One of the best sorts. Pkt., 5c and 10c; lb., 40c; 2 lbs., 75c; 5 lbs., \$1.75; bu., \$18.00.

KING OF THE GARDEN (Pole Lima). Somewhat later than the Bush Limas, but very prolific. Pkt., 5c and 10c; lb., 40c; 2 lbs., 75c; 5 lbs., \$1.75; bu., \$18.00.

HENDERSON'S BUSH LIMA (Baby Lima). One of the smaller-seeded sorts but the most prolific of all the Bush Limas. Somewhat earlier than the other varieties and bears all the time. Pkt., 5c and 10c; lb., 30c; 2 lbs., 60c; 5 lbs., \$1.25; bu., \$14.00.



Pencil Pod Black Wax Beans.

Vegetable Seeds

All the varieties listed in the Vegetable Seed Department are those of known merit. Seeds are from stock grown especially for seed and have been tested for germination. We have varieties especially attractive for the market gardener and others for the home garden.

ASPARAGUS

Plant the seed early, keep the weeds cleared out, with the rows any convenient distance apart. One ounce will sow 50 feet of drill.

PALMETTO. Pkt., 5c; oz., 10c; ¼ lb., 35c; lb., \$1.00.

CONOVER'S COLOSSAL. The good old standard variety, especially for canning. Pkt., 5c; oz., 10c; ¼ lb., 35c; lb., \$1.00.

MARTHA WASHINGTON. This variety is especially rust resisting, and we especially recommend it. Pkt., 5c; oz., 20c; ¼ lb., 60c; lb., \$2.00.

MARY WASHINGTON. This strain is by far the best of the Washington varieties. It is extra large and very rust resisting. Pkt., 10c; oz., 35c; ¼ lb., \$1.15; lb., \$4.00.

ASPARAGUS ROOTS

Asparagus roots may be purchased in the Spring. Plant them in rich soil 3 or 4 inches deep in rows of any convenient width. You can save at least a year and a half by planting our healthy, 2-year-old roots. 60 plants will plant 100 feet of row.

PALMETTO. 2-year-old, 25c per doz.; \$1.50 per 100; \$10.00 per 1000.

CONOVER'S COLOSSAL. 2-year-old, 25c per doz.; \$1.50 per 100; \$10.00 per 1000.

MARTHA WASHINGTON. 2-year-old, 50c per doz.; \$3.00 per 100; \$15.00 per 1000.



Burpee's Stringless Green Pod.

BEETS

Table Varieties

Rich soil is very important in growing table Beets. Plant the seed as early as possible and dig young. Do not allow them to become overgrown.

DETROIT DARK RED. Very early; medium size; globe-shaped; dark red skin. Pkt., 5c; oz., 10c; ¼ lb., 25c; lb., 75c.

EARLY BLOOD TURNIP BEET. Our standard variety with bright red flesh. It is a good keeper. Pkt., 5c; oz., 10c; ¼ lb., 25c; lb., 75c.

CRIMSON GLOBE. Same as Detroit Dark Red only a lighter shade of red. Slightly zoned with white. Pkt., 5c; oz., 10c; ¼ lb., 25c; lb., 75c.

EARLY ECLIPSE. One of the earliest varieties. Round and slightly pointed in shape. Quick growing and tender. Pkt., 5c; oz., 10c; ¼ lb., 25c; lb., 75c.

CROSBY'S EGYPTIAN. An early variety of bright red color; tender and of fine quality. Very uniform in size. Pkt., 5c; oz., 10c; ¼ lb., 25c; lb., 75c.

Swiss Chard or Spinach Beet

Cooked like spinach greens. The leafy portion of Swiss Chard is of most excellent flavor. Pkt., 5c; oz., 10c; ¼ lb., 25c; lb., 75c.

Mangel Wurzels

MAMMOTH LONG RED. The most popular red. Often called Giant or Jumbo. Often weighs 30 lbs. each. Very prolific. Pkt., 5c; oz., 10c; ¼ lb., 20c; lb., 50c.

BRUSSELS SPROUTS

A member of the Cabbage family. The sprouts are nothing more than miniature cabbages which grow closely together on the stalks. Plants grow from 2 to 3 feet high and are cultivated the same as cabbage. One-quarter ounce to one hundred feet of row.

PERFECTION. Pkt., 5c; oz., 20c; ¼ lb., 60c; lb., \$2.00.

DANISH PRIZE. Especially tall grower. Pkt., 5c; oz., 25c; ¼ lb., 75c; lb., \$2.50.

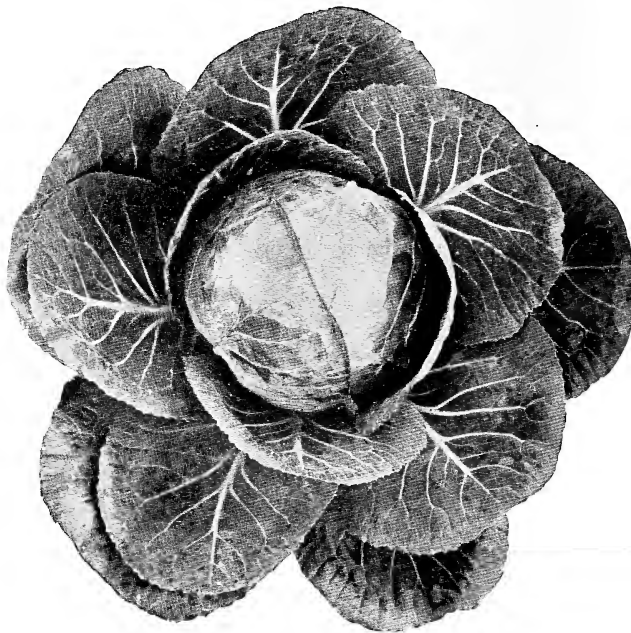
CABBAGE

We carry a complete line of cabbage seed, especially those varieties adapted to the market gardeners. One ounce of seed will produce 2000 plants.

EARLIEST OF ALL. This new strain of the Copenhagen type has all the qualities that make it desirable for early market use. It produces good sized, round solid heads about ten days earlier than other early varieties. Give it a trial. Pkt., 5c; oz., 40c; ¼ lb., \$1.50; lb., \$5.00.

COPENHAGEN MARKET. One of the very best early sorts with solid heads and very marketable. Pkt., 5c; oz., 25c; ¼ lb., 80c; lb., \$3.00.

EXTRA EARLY JERSEY WAKEFIELD. One of the old standard varieties of early cabbage, solid heads, generally pointed at the end with but few outer leaves. Pkt., 5c; oz., 25c; ¼ lb., 80c; lb., \$3.00.



Golden Acre Cabbage.

GOLDEN ACRE. A new introduction. One of the earliest cabbages in existence. The most important new cabbage introduced in years. Matures round hard heads eighty days from time of sowing seed. Excellent for the market gardener. Pkt., 5c; oz., 50c; ¼ lb., \$1.75; lb., \$6.00.

DANISH BALLHEAD. Very popular in this section of the country. Very solid, round head with short stem. Pkt., 5c; oz., 25c; ¼ lb., 80c; lb., \$3.00.

DANISH ROUNDHEAD. A favorite among a great many market gardeners. Short stem with solid round head. Pkt., 5c; oz., 25c; ¼ lb., 80c; lb., \$3.00.

LARGE LATE FLAT DUTCH. It has a very short stem and is of very compact growth. Free from tendency to burst, solid heads, flat, bluish-green color. Pkt., 5c; oz., 25c; ¼ lb., 80c; lb., \$3.00.

AMERICAN SAVOY. Crimped leaves and is more tender, milder and of sweeter flavor than the smooth leaved varieties. Great variety for the gardener. Pkt., 5c; oz., 20c; ¼ lb., 70c; lb., \$2.25.

CHINESE or CELERY CABBAGE. The heads are about a foot long and 3 or 4 inches in diameter. Can be used any way that cabbage or cauliflower or lettuce is used. Very tender and mild flavor. Pkt., 5c; oz., 50c; ¼ lb., \$1.50; lb., \$5.00.

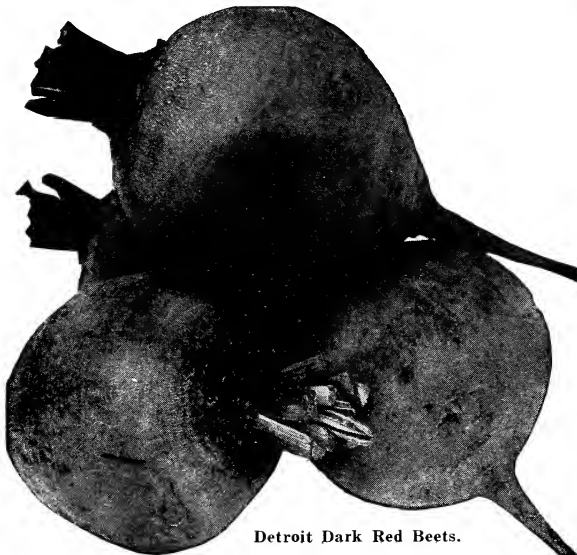
Red Cabbage

MAMMOTH ROCK RED. The largest of the red cabbages and a sure header. Heads round, very solid, weighing 8 to 12 pounds. Pkt., 5c; oz., 25c; ¼ lb., 80c; lb., \$3.00.

RED HOLLAND EXPORT. An early variety, dark red, solid heads. Excellent shipper. Pkt., 5c; oz., 40c; ¼ lb., \$1.25; lb., \$4.00.

EARLY DARK RED. Pkt., 5c; oz., 40c; ¼ lb., \$1.25; lb., \$4.00.

DANISH DARK RED. Pkt., 5c; oz., 25c; ¼ lb., 80c; lb., \$3.00.



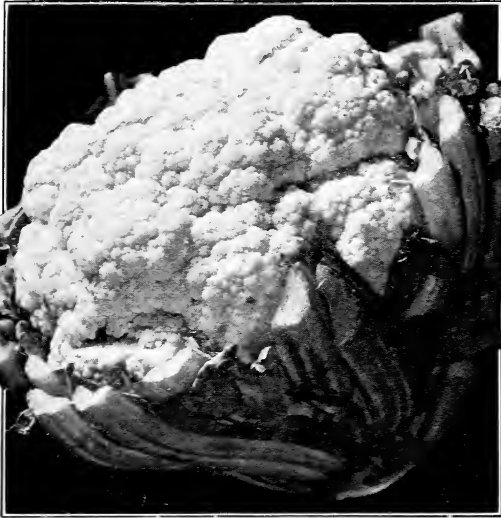
Detroit Dark Red Beets.



Swiss Chard or Spinach Beet.



Brussels Sprouts.



Early Snowball Cauliflower.

CAULIFLOWER

Although one of the most delicious vegetables, little grown except by professional gardeners because of the erroneous notion that it is hard to grow. Every gardener should grow cauliflower whether professional or not.

EARLY SNOWBALL. This is the earliest of the standard varieties. Not so large but pure white color, sure to head. Pkt., 10c; oz., \$2.00; ¼ lb., \$6.00; lb., \$20.00.

EARLY SIX WEEKS. Another early variety. Pkt., 10c; oz., \$2.00; ¼ lb., \$6.00; lb., \$20.00.

DRY WEATHER or DANISH GIANT. This new strain originated in Denmark. Produces large, solid, pure white heads that mature later than Early Snowball. Especially adapted to dry situations. Pkt., 10c; oz., \$2.00; ¼ lb., \$6.00; lb., \$20.00.

CARROTS

Every garden should have carrots. Our carrot seed is the best that money can buy. One ounce of seed will sow 100 feet of row; four pounds of seed for an acre.

TABLE VARIETIES

DANVERS HALF LONG. A broad-shouldered carrot of about 7 to 8 inches in length; smooth skin, and excellent for cooking. Price, pkt., 5c; oz., 15c; ¼ lb., 30c; lb., \$1.00.

CHANTENAY. An excellent bunching carrot. An early main crop sort for the market gardener. About 5 to 6 inches long. Rich orange color. Pkt., 5c; oz., 15c; ¼ lb., 30c; lb., \$1.00.

OXHEART. A stocky sort, usually about 4 inches long. Flesh bright orange; fine grain and sweet flavor. Pkt., 5c; oz., 15c; ¼ lb., 30c; lb., \$1.00.

STOCK FEEDING VARIETY

LARGE YELLOW BELGIAN. This is one of the best varieties for feeding stock; very prolific and easy to grow. Pkt., 5c; oz., 10c; ¼ lb., 25c; lb., 80c.

CELERY

Celery seed is slow to germinate and ample time must be given. Sow thinly, cover lightly, keep constantly moist. Count on about 7,500 plants per ounce of seed or ¼ lb. per acre.

GOLDEN SELF BLANCHING (French Grown). Extra select strain. Our seed of this variety comes to us every season direct from the originator in France. As an early seller it is a leading sort on all markets. Pkt., 10c; oz., \$1.25; ¼ lb., \$4.50; lb., \$16.00.

GOLDEN SELF BLANCHING (American Grown). We offer American grown seed of this leading variety. This seed is grown from the best selected French stock seed. Pkt., 10c; oz., 60c; ¼ lb., \$2.00; lb., \$7.00.

EASY BLEACHING. A useful variety for the amateur gardener as well as the professional. Fine for early use and Winter keeping. Very rich to eat. Pkt., 10c; oz., 70c; ¼ lb., \$2.25; lb., \$7.50.

SOUP or CUTTING. This variety is principally used in soups and chop suey, etc. Has excellent flavor when cooked. Pkt., 5c; oz., 20c; ¼ lb., 60c; lb., \$2.00.

CELERIAC or TURNIP ROOTED CELERY. Forms a turnip-shaped root with flavor of celery. Splendid for stews, soups, etc. Pkt., 5c; oz., 20c; ¼ lb., 60c; lb., \$2.00.

OLD CELERY SEED FOR FLAVORING. Pkt., 5c; oz., 10c; ¼ lb., 20c; lb., 60c.

CUCUMBERS

The plants are tender and planting should be delayed until settled weather. Two ounces of seed for one hundred hills; two pounds for an acre.

DAVIS PERFECT. Deep green in color, rather long, averaging about 10 inches, and rather slender; flesh fine quality. Pkt., 5c; oz., 15c; ¼ lb., 40c; lb., \$1.50.

IMPROVED WHITE SPINE. The most popular variety among the slicers. It is of medium length, tapering, and shades to a lighter green at the end. Pkt., 5c; oz., 15c; ¼ lb., 40c; lb., \$1.25.

EARLY GREEN CLUSTER. A good slicing variety and when ready for the table it is about 3 to 5 inches long. Pkt., 5c; oz., 15c; ¼ lb., 40c; lb., \$1.25.

IMPROVED LONG GREEN. An almost seedless variety; excellent for slicing and will carry well to market. Pkt., 5c; oz., 15c; ¼ lb., 50c; lb., \$1.50.

CHICAGO PICKLING. A very prolific variety, having all the qualities desired by those who raise cucumbers for commercial pickles. Pkt., 5c; oz., 15c; ¼ lb., 40c; lb., \$1.25.

BOSTON PICKLING. Very prolific. The fruits are short, smooth, and bright green. Excellent quality for medium sized pickles. Ready in fifty days. Pkt., 5c; oz., 15c; ¼ lb., 40c; lb., \$1.25.

GHERKIN. The most delicious small fruited variety. Used only for pickling; from 2 to 3 inches long, covered with sharp spines. Pkt., 5c; oz., 20c; ¼ lb., 60c; lb., \$2.00.

CRESS

CURLED or PEPPER GRASS. Pkt., 5c; oz., 10c; ¼ lb., 25c; lb., 75c.

WATER CRESS. Pkt., 10c; oz., 40c; ¼ lb., \$1.10; lb., \$4.00.

CHIVES

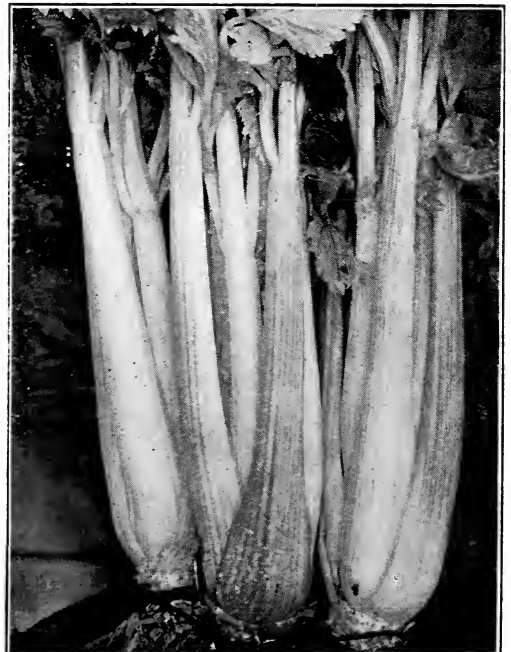
An onion-like plant used as a salad and for flavoring soups. Pkt., 5c; oz., 50c; ¼ lb., \$1.75; lb., \$6.00.

COLLARDS

GEORGIA or SOUTHERN. The standard variety of Collards planted in every section. Sow seeds as for cabbage. Pkt., 5c; oz., 15c; ¼ lb., 40c; lb., \$1.00.

CORN SALAD or LAMB'S LETTUCE

A most refreshing salad, especially for Winter use. Can also be cooked and used like spinach. One ounce will plant a row 50 feet long. Pkt., 5c; oz., 15c; ¼ lb., 25c; lb., \$1.25.



New Golden Self Blanching Celery.

SWEET CORN

We offer the leading varieties that are adapted to both market gardener and the owner of the private garden. Sweet corn seed weighs forty to fifty pounds to the bush according to variety, therefore we quote by pounds instead of by measure.

BANTAM EVERGREEN. This new variety is nearly the size of Evergreen, with the Golden Bantam color and flavor. Especially recommended by the Michigan State College. Pkt., 5c and 10c; lb., 25c; 5 lbs., \$1.00; 50 lbs., \$8.00.

GOLDEN BANTAM. This popular variety is dwarf growing and has very regular golden yellow kernels; sweet and tender. For market and home garden. Ready to use in seventy days. Pkt., 5c and 10c; lb., 25c; 5 lbs., \$1.00; 50 lbs., \$8.00.

EARLY MAMMOTH WHITE CORY. Ears are twelve rows about 7 inches long; flavor is very sweet. One of the best sellers on the market. Pkt., 5c and 10c; lb., 25c; 5 lbs., \$1.00; 50 lbs., \$8.00.

EARLY EVERGREEN. This new variety is identical in flavor, shape, and size with Stowell's Evergreen, but about ten days earlier. Pkt., 5c and 10c; lb., 25c; 5 lbs., \$1.00; 50 lbs., \$8.00.

EARLY MINNESOTA. This is one of the old standbys of the early varieties. Ears about 8 inches long and eight rows; sweet, tender kernels. Pkt., 5c and 10c; lb., 25c; 5 lbs., \$1.00; 50 lbs., \$8.00.

BLACK MEXICAN. This corn when in condition for the table is clear white, but the ripe grain is bluish-black. For family use it is a most desirable second early sort. Pkt., 5c and 10c; lb., 25c; 5 lbs., \$1.00; 50 lbs., \$8.00.

COUNTRY GENTLEMAN. Finest and sweetest of all corn for the table. It can be identified easily by the irregular arrangement of the kernels. Rarely ever produces less than 3 ears to the stalk; ears 8 to 9 inches in length. Pkt., 5c and 10c; lb., 25c; 5 lbs., \$1.00; 50 lbs., \$8.00.

STOWELL'S EVERGREEN. This is the old standby for main crop variety. Our strain is large eared, hardy, and productive. Pkt., 5c and 10c; lb., 25c; 5 lbs., \$1.00; 50 lbs., \$8.00.

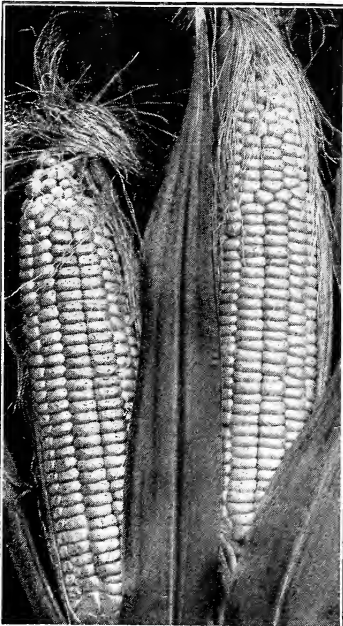
EARLY MAYFLOWER. A very popular early variety. Ears average 6 to 8 inches with large kernels and very sweet and tender. Considered much better than the Cory. Pkt., 5c and 10c; lb., 25c; 5 lbs., \$1.00; 50 lbs., \$8.00.

NEW EARLY GOLDEN BANTAM. The same as the regular Golden Bantam but it is about a week earlier and therefore in great demand by market gardeners. Early corn brings high prices. Pkt., 5c and 10c; lb., 30c; 5 lbs., \$1.25; 50 lbs., \$10.00.

EARLY SURPRISE. This is considered by many as the earliest White Sweet Corn. It produces medium size ears of excellent flavor. Be sure to plant some of this corn. Pkt., 5c and 10c; lb., 30c; 5 lbs., \$1.25; 50 lbs., \$10.00.

DILL SEED

Leaves and seed heads are used in making dill pickles and for flavoring soups. Pkt., 5c; oz., 10c; ¼ lb., 30c; lb., 90c.



Stowell's Evergreen.

See
Gladiolus
Collection
Back
Cover

ENDIVE

One of the best salads for Fall and Winter use. Also desirable for greens and flavoring soups and stews. One ounce of seed to about 300 feet of row.

MOSS CURLED. One of the favorites in this section of the country for market gardeners as well as the owners of private gardens. Pkt., 5c; oz., 15c; ¼ lb., 35c; lb., \$1.25.

GREEN CURLED. A fine market sort. Has tender green leaves which blanch white. Pkt., 5c; oz., 15c; ¼ lb., 35c; lb., \$1.25.

BROAD LEAVED BATAVIAN. Leaves large and broad, slightly curled. Tie up for blanching. Pkt., 5c; oz., 15c; ¼ lb., 35c; lb., \$1.25.

KALE or BORECOLE

Kale is very easily grown and much hardier than any cabbage. Splendid greens for early Fall, Winter, or Spring use. One may start cutting Kale in 55 to 60 days, but flavor is improved by a good frost in the Fall. Sowing may be as late as August 1st. One ounce of seed to 300 feet of drill.

TALL GREEN CURLED SCOTCH. Grows about 2 feet high. Leaves dark green and finely curled. Very hardy. When leaves are of fair size pull off and use the lower ones and let the balance grow on and furnish continuous supply. Pkt., 5c; oz., 15c; ¼ lb., 35c; lb., \$1.25.

DWARF GREEN CURLED SCOTCH. Leaves very curly, rich green; remarkably tender and delicate in flavor. Pkt., 5c; oz., 15c; ¼ lb., 35c; lb., \$1.25.

KOHL-RABI

Sweeter and a finer flavor than turnips and cooked in the same way. Sow the seed in the Spring and again in June and July. For continuous supply sow every two or three weeks. Kohl-rabi is most tender when the roots are less than two to three inches in diameter.

EARLY WHITE VIENNA. Flesh white and tender. Excellent forcing variety. Ready for the table in sixty days. Pkt., 5c; oz., 25c; ¼ lb., 70c; lb., \$2.00.

EARLY PURPLE VIENNA. Fine flavored and tender, with pure white flesh; skin of purple color. Ready for the table in 65 days. Pkt., 5c; oz., 25c; ¼ lb., 70c; lb., \$2.60.

EGGPLANT

Sow the seed in the hotbed in March. Transplant when 3 inches high. Requires rich soil.

NEW YORK PURPLE. The general variety for both market and private use, and is a standard sort for both North and South. Fruit oval color dark purple. Pkt., 10c; oz., 40c; ¼ lb., \$1.40; lb., \$5.00.

BLACK BEAUTY. Extremely popular in this section of the country and is very early; in fact the earliest good market variety. Ready for the table in 135 days. Pkt., 10c; oz., 40c; ¼ lb., \$1.40; lb., \$5.00.

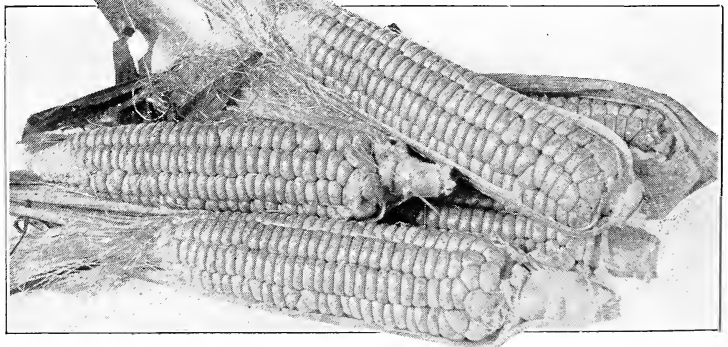
LEEK

AMERICAN FLAG. Broad leaves; a strong and vigorous grower; very hardy; ready for the table in 85 days. Pkt., 5c; oz., 20c; ¼ lb., 60c; lb., \$2.00.

POP CORN

AUSTRALIAN HULLLESS. The quality pop corn. Also known in some sections as Japanese Rice, Tom Thumb or Bumblebee. Excellent flavor. Entire absence of hull or shell when popped. Sample ears, per pound, 20c.

Early Golden Bantam.



LETTUCE

To have the best lettuce, it should be kept growing rapidly. A light rich soil will do this. It must have plenty of sunlight and moisture. One ounce will sow 125 feet of drill and produce 3000 plants, four pounds to the acre.

CURLED OR LOOSE LEAVED VARIETIES

GRAND RAPIDS FORCING. This variety of curled or loose leaved lettuce is especially adapted to greenhouse culture in the Winter. This superior lettuce is of rapid upright growth and may be planted close; not liable to rot. Will stand several days after being ready to cut without injury. An excellent shipper. Especially recommended by the Michigan State College. Pkt., 5c; oz., 20c; ¼ lb., 60c; lb., \$1.75.

BLACK SEEDED SIMPSON. A splendid loose or curled leaf variety that is very popular with market and home gardeners. Always reliable and easily grown under glass, in cold frame or in open ground. Ready for market in forty-five days. Pkt., 5c; oz., 20c; ¼ lb., 60c; lb., \$1.75.

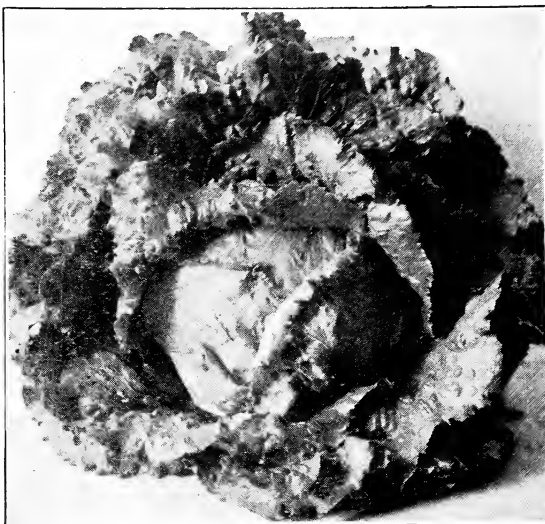
EARLY CURLED SIMPSON. Early erect growing, but somewhat smaller than the preceding. Largely planted for outdoor crop. Pkt., 5c; oz., 20c; ¼ lb., 60c; lb., \$1.75.

HEADING VARIETIES

PRIZEHEAD. This old standard variety is still the best of the large thin-leaved clustering sorts for the home gardener. Is not a good variety to ship. Leaves are crimped, bright green, tinged with brownish red at the edge. Exceedingly tender. Pkt., 5c; oz., 20c; ¼ lb., 60c; lb., \$1.75.

BIG BOSTON. One of the greatest favorites. It is a large cabbage variety, forming a big yet compact, tender and crisp head of rich yellow color inside. Equally good for open ground or forcing; a favorite sort with all planters. Pkt., 5c; oz., 20c; ¼ lb., 60c; lb., \$1.75.

ICEBERG. One of the very best summer-growing varieties. Makes a firm hard head with strong incurved ribs blanching the heart leaves to a creamy whiteness. A winner for the home gardener. Pkt., 5c; oz., 20c; ¼ lb., 60c; lb., \$1.75.



Iceberg Head Lettuce.

MUSKMELON

ORANGE FLESH VARIETIES

LAKE CHAMPLAIN. Generally known as the earliest melon in America. Flesh is thick and very sweet. We do not recommend it for long distance shipment. Pkt., 10c; oz., 25c; ¼ lb., 75c; lb., \$2.50.

SELECT OSAGE. We give particular attention to our strain of Osage melons. The seeds are carefully selected from stock that is particularly true to type. Medium size, oval, slightly ribbed, dark green, and nicely netted. An excellent variety for market. Pkt., 10c; oz., 25c; ¼ lb., 75c; lb., \$2.50.

STANDARD QUALITY OSAGE. This is field run seed grown from selected stock and is equal to the general quality of seed offered; much superior to Western grown seed. Pkt., 5c; oz., 20c; ¼ lb., 50c; lb., \$1.50.

HEARTS OF GOLD. We consider this the finest main crop basket melon in existence. Hearts of Gold is a medium early melon and ripens at the same time as our Select Osage. Flesh is thick, tender, a beautiful salmon color, very sweet and delicious; ribbed and covered with dense netting. An excellent shipper, bringing top prices on all markets. Pkt., 10c; oz., 25c; ¼ lb., 60c; lb., \$2.00.

TIP TOP. Its appearance on the market is very attractive. Sells on sight. The melons are large size, nearly round, evenly ribbed and moderately netted. Flesh deep salmon, sweet and spicy. Pkt., 5c; oz., 20c; ¼ lb., 50c; lb., \$1.75.

BENDER'S SURPRISE. Fine flavor, large size, and earliness combine to make this melon a great favorite. Introduced by Mr. Bender, well known New York melon grower. Oval shape, cross netted, flesh deep orange. A good shipper. Pkt., 5c; oz., 20c; ¼ lb., 50c; lb., \$1.75.

GREEN FLESH VARIETIES

EXTRA EARLY HACKENSACK. Ten days earlier than the old Hackensack. Fruit round, flattened at the ends, irregularly ribbed and heavily netted. Green flesh and of excellent flavor. Pkt., 5c; oz., 20c; ¼ lb., 50c; lb., \$1.50.

ROCKY FORD or NETTED GEM.

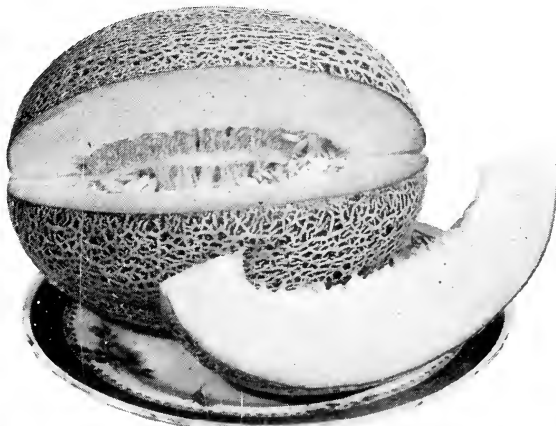
The melon that made Rocky Ford, Colorado, famous. An excellent market sort of the small basket melon type. Melons are uniform in size and shape, being slightly oval. Netting fine and prominent. Light green flesh, rich spicy flavor. The seed we offer is of the best stock. Pkt., 5c; oz., 20c; ¼ lb., 50c; lb., \$1.50.

MUSTARD

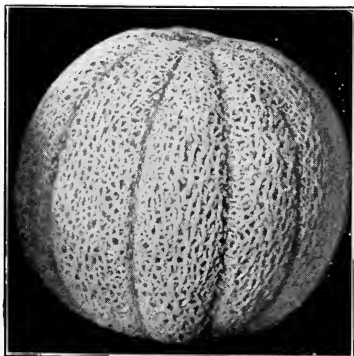
Easy to grow. Sow in drills of 12 to 15 inches apart. Cover lightly.

GIANT SOUTHERN CURLED. One of the best standard sorts. Pkt., 5c; oz., 10c; ¼ lb., 25c; lb., 80c.

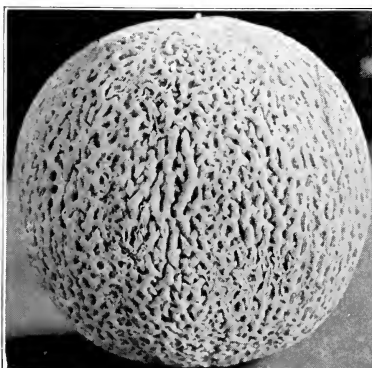
WHITE ENGLISH. The leaves are a light green; mild and tender when young. Seed large light yellow and used extensively for flavoring pickles, preserves, etc. Pkt., 5c; oz., 10c; ¼ lb., 25c; lb., 75c.



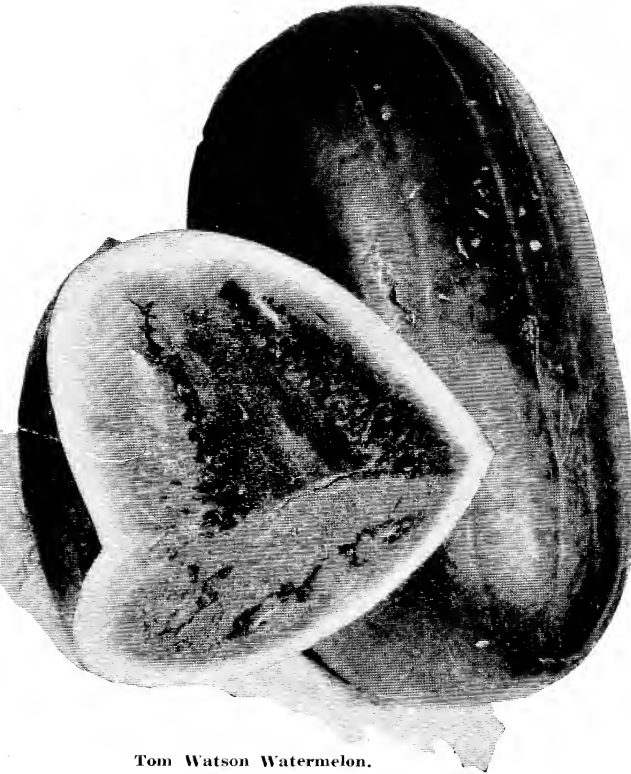
Select Osage Melon.



Hearts of Gold Melon.



Rocky Ford Melon.



Tom Watson Watermelon.

WATERMELON

A light sandy soil with good exposure to the sun is the best for watermelons. Should be prepared deep, but not very shallow cultivation. Hoe frequently and thoroughly. One ounce of seed is required for forty hills, three or four pounds will plant an acre.

IRISH GRAY. Uniform in size and closely resembles Kleckley's Sweet, except color is a yellowish gray. Flesh is very sweet and firm without hard center. A very good shipper. Pkt., 5c; oz., 10c; ¼ lb., 30c; lb., \$1.00.

SWEETHEART. Our strain is the best sweet-hearted kind for home and market use. Fruit large, oval, light green; flesh bright red, crisp, and exceedingly sweet. Good shipper. Pkt., 5c; oz., 10c; ¼ lb., 25c; lb., 85c.

COLE'S EARLY. This excellent melon is the best early sort for family use and the home market. Medium size; bright red flesh; very sweet. Not a good shipper. Pkt., 5c; oz., 10c; ¼ lb., 25c; lb., 85c.

HARRIS' EARLIEST. The best shipper in the early class. The skin is mottled with green and white. Flesh is dark red, sweet, juicy, and crisp. Average 9 to 15 lbs. Matures in seventy-five days. Pkt., 5c; oz., 10c; ¼ lb., 25c; lb., 85c.

KLECKLEY'S SWEET or MONTE CRISTO. This popular standard variety is the sweetest of all. On account of its crispness and tender flesh it is not recommended for shipping. For home use and nearby markets it has no equal. Color very dark green. Seeds are white and close to the rind. Flesh a pure scarlet. Pkt., 5c; oz., 10c; ¼ lb., 25c; lb., 85c.

TOM WATSON. This main crop sort is always a great money maker, having readiest sale on all markets. Excellent for long distance shipping. It is a long green variety; flesh is superb quality, and intensely red in color. Pkt., 5c; oz., 10c; ¼ lb., 25c; lb., 85c.

PEERLESS or ICE CREAM. This old standard is the best general cropper for the home market. Medium early. Melons are light green mottled, large size, oblong in shape; flesh bright scarlet, solid to the center; excellent flavor. Pkt., 5c; oz., 10c; ¼ lb., 25c; lb., 85c.

GOLDEN HONEY. This is the popular golden flesh variety. Fruit medium large, oblong, a rind of dark green color. Excellent for home garden and exhibit purposes. Pkt., 5c; oz., 10c; ¼ lb., 35c; lb., \$1.10.

CITRONS

Used for making preserves. Flesh is thick and color white and makes preserves of excellent quality. Cultivation similar to watermelon. Pkt., 5c; oz., 10c; ¼ lb., 25c; lb., 85c.

ONION SEED

Be very careful about preparing the soil. It should be pulverized and smooth. The richer the soil the bigger the crop. Sow the seed in rows 12 to 15 inches apart. Cover ½ inch deep. One ounce will sow about 150 feet of drill, 4 to 5 lbs. to the acre.

MICHIGAN YELLOW GLOBE. Onions large, globe-shaped, with white flesh, mild and juicy. Outward skin beautiful yellow color. Ideal market onion. Pkt., 10c; oz., 20c; ¼ lb., 60c; lb., \$1.50.

YELLOW GLOBE DANVERS. This standard variety is one of the best of the yellow small-necked varieties. Excellent yielder and a good market sort. Pkt., 10c; oz., 20c; ¼ lb., 60c; lb., \$1.50.

RED WETHERSFIELD. Outer skin is rich deep purplish red, smooth and glossy. Flesh white and slightly tinged with rose. A good keeper and shipper. Pkt., 10c; oz., 20c; ¼ lb., 60c; lb., \$1.50.

PRIZETAKER. A very satisfactory onion to grow for seed planting. Much larger than Globe Danvers under ordinary conditions. Will mature in 130 to 140 days. Pkt., 10c; oz., 25c; ¼ lb., 75c; lb., \$2.00.

SILVERSKIN or WHITE PORTUGAL. A mild, pleasant flavored onion, somewhat flattened in shape. Popular for general use. Matures quickly. Pkt., 10c; oz., 25c; ¼ lb., 75c; lb., \$2.50.

SOUTHPORT YELLOW GLOBE. Flesh white, mild flavor, large in size and an excellent keeper. Pkt., 10c; oz., 20c; ¼ lb., 60c; lb., \$1.50.

SOUTHPORT RED GLOBE. Just the right size to command highest market price. Darker skin and better keeper than any other strain of Southport. Excellent keeper. Pkt., 10c; oz., 20c; ¼ lb., 60c; lb., \$1.75.

SOUTHPORT WHITE GLOBE. Differs from other Southports in color only. Skin pure white. Pkt., 10c; oz., 25c; ¼ lb., 75c; lb., \$2.50.

WHITE QUEEN. A very good early pickling variety. Somewhat flattened in shape, pure white. One to 1½ inches in diameter. Delicate flavor. Pkt., 10c; oz., 30c; ¼ lb., 90c; lb., \$3.00.

EARLY WHITE WELSH. Used extensively for green onions. It forms no bulbs. The shoots attain marketable size very quickly and sell at top prices. Pkt., 10c; oz., 25c; ¼ lb., 75c; lb., \$2.50.

ONION SETS

WHITE SILVERSKIN SETS. Market gardeners plant these white sets in large quantities. Quart, 30c.

YELLOW ONION SETS. Medium size fine dry sets. Planted extensively for market or home use. Quart, 30c.

YELLOW MULTIPLIERS. Also called Shallots. A favorite for the home gardener. Superior flavor. These do not form large onions for market, but are planted for green onions only. Very productive. Quart, 30c.

WRITE FOR PRICES ON ONION SETS IN LARGER QUANTITIES

OKRA or GUMBO

Excellent for soups, stews, etc. Much liked when pickled. Plant in hills 2 feet apart each way.

WHITE VELVET. Pods round, smooth, and have a white velvety appearance. Very tender; superior flavor. Pkt., 5c; oz., 10c; ¼ lb., 25c; lb., 75c.



Silverskin or White Portugal Onion.

PEAS

Peas are the most valuable main crop for the market gardeners. We list only the best varieties of perfect value. One lb. of seed to 50 feet of row, 120 to 180 lbs. per acre.

EARLY VARIETIES

ALASKA. Very desirable pea for market, dark green pods, and good shipper. Pkt., 5c and 10c; lb., 30c; 2 lbs., 50c; 5 lbs., \$1.10; bu., \$10.00.

AMERICAN WONDER. The earliest wrinkled pea. Vine 10 to 12 inches high. Very prolific; excellent flavor. Recommended for family use. Pkt., 5c and 10c; lb., 30c; 2 lbs., 50c; 5 lbs., \$1.10; bu., \$10.00.

LITTLE GEM. An early dwarf pea for market and family use. Pods large and crowded with 6 to 9 peas. A little dwarf pea for canners. Pkt., 5c and 10c; lb., 30c; 2 lbs., 50c; 5 lbs., \$1.10; bu., \$10.00.

LITTLE MARVEL. Vines grow very even, about 15 inches high, bearing good sized pods, frequently in pairs. Good seller on all markets. Pkt., 5c and 10c; lb., 30c; 2 lbs., 50c; 5 lbs., \$1.10; bu., \$10.00.

NOTT'S EXCELSIOR. One of the most popular varieties for the home garden. Is also very desirable for the market gardener. Pods are well filled and peas are of delicious flavor. Pkt., 5c and 10c; lb., 30c; 2 lbs., 50c; 5 lbs., \$1.10; bu., \$10.00.

THOMAS LAXTON. The leading market sort in this section. Peas a deep green, wrinkled and very sweet. A popular seller on all markets, ready for market in 58 days. Pkt., 10c; lb., 30c; 2 lbs., 50c; 5 lbs., \$1.10; bu., \$10.00.

LAXTONIAN. Another early large podded variety which is becoming more popular every year. Does not grow very tall and produces large pods filled with peas of the finest quality. Pkt., 5c and 10c; lb., 30c; 2 lbs., 50c; 5 lbs., \$1.10; bu., \$10.00.

DWARF TELEPHONE. Grows about two feet high; vine and foliage dark green and quite stout. Pods are large, straight and pointed and filled with 8 to 9 dark green peas of the very best quality. Pkt., 5c and 10c; lb., 30c; 2 lbs., 50c; 5 lbs., \$1.10; bu., \$10.00.

LATE AND MEDIUM VARIETIES

TELEPHONE. A leader with market gardeners. Perfect main crop sort known to everybody. A sure cropper. Our strain is the very best. Pkt., 5c and 10c; lb., 30c; 2 lbs., 50c; 5 lbs., \$1.10; bu., \$10.00.

ALDERMAN. This fine new pea is of the Telephone type excepting the pods are of darker color. Highly recommended to market gardeners as a splendid yielder. Pkt., 5c and 10c; lb., 30c; 2 lbs., 50c; 5 lbs., \$1.10; bu., \$10.00.

CHAMPION OF ENGLAND. One of the earliest and best in cultivation. Pods are of good size and well filled. Produced in great abundance. Cannot be overpraised as a standard late sort. Pkt., 5c and 10c; lb., 30c; 2 lbs., 50c; 5 lbs., \$1.10; bu., \$10.00.

EVERBEARING. Produces well filled pods, three inches long and light green color. Bears a long season. Pkt., 5c and 10c; lb., 30c; 2 lbs., 50c; 5 lbs., \$1.10; bu., \$10.00.



Laxtonian Peas.

WHITE MARROWFAT. Heavy yielding late variety, seeds are large, smooth and yellowish white. Dry peas are fine for cooking. Pkt., 5c and 10c; lb., 25c; 2 lbs., 45c; 5 lbs., \$1.00; bu., \$10.00.

DWARF GRAY SUGAR (Dutch Peultjes). Medium early, hardy and very productive. Seeds are gray-brown color and somewhat wrinkled. Pkt., 5c and 10c; lb., 30c; 2 lbs., 50c; 5 lbs., \$1.10; bu., \$10.00.

PEANUTS

Peanuts can be easily and successfully grown in this section: very interesting. Let the children grow some.

NEW MAMMOTH BUSH. This peanut does exceedingly well in the North. 18 inches high. They are good producers and do best in light sandy soil. Pkt., 10c; ½ lb., 25c; lb., 45c.

EARLY SWEET. This variety is very easy to raise and very early. The nuts are exceedingly sweet and rich when roasted. Light sandy soil suits them. Pkt., 10c; ½ lb., 25c; lb., 45c.

PARSLEY

CHAMPION MOSS CURLED. The best known and most popular variety. Ours is a selected strain. Pkt., 5c; oz., 15c; ¼ lb., 35c; lb., \$1.00.

HAMBURG TURNIP ROOTED. The root which resembles a small parsnip is the edible portion of this variety. Used for flavoring soups, etc. Foliage used the same as Parsley. Pkt., 5c; oz., 15c; ¼ lb., 35c; lb., \$1.00.

PARSNIP

HOLLOW CROWN. This is the most popular variety and a great cropper. Long white roots, tender and sugary. Pkt., 5c; oz., 10c; ¼ lb., 25c; lb., 75c.



American Wonder Peas.

PEPPERS

Peppers like a light, rich, warm soil. They require about the same treatment as tomatoes. One ounce is sufficient for 1500 plants, $\frac{1}{2}$ lb. to transplant an acre.

CHINESE GIANT. The fruits are of monstrous size. The shape is round and blocky. Very blunt nose. Flesh is thick and entirely free from any fiery flavor. Much used in salads. Pkt., 10c; oz., 60c; $\frac{1}{4}$ lb., \$1.75; lb., \$6.00.

LARGE BELL or BULL NOSE. An old standard market sort because of its good size, shape and appearance. Very hardy, matures early, fruit is bright red at maturity. Flesh is thick and of somewhat pungent taste. Pkt., 10c; oz., 35c; $\frac{1}{4}$ lb., \$1.20; lb., \$4.00.

RUBY KING. This popular variety is grown everywhere. Large fruits, 4 to 6 inches long, 3 to 4 inches thick. Flesh is thick, crisp and tender. Flavor is pungent though it is considered a sweet pepper. Pkt., 10c; oz., 35c; $\frac{1}{4}$ lb., \$1.20; lb., \$4.00.

HARRIS EARLIEST. Particularly popular in this section of the country, smooth skin, attractive color and very early. Pkt., 10c; oz., 60c; $\frac{1}{4}$ lb., \$1.75; lb., \$6.00.

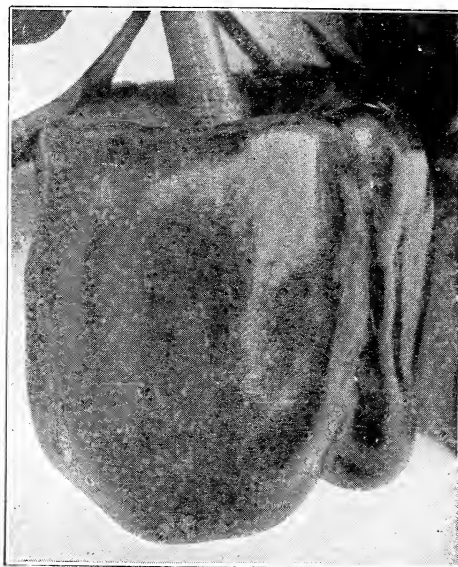
RED CAYENNE. Fruits are of conical shape. Two inches long, very thick and very hot. Pkt., 10c; oz., 35c; $\frac{1}{4}$ lb., \$1.20; lb., \$4.00.

PIMIENTO. The fruits are of medium size and entirely free from any fiery flavor. Considered the sweetest of all Peppers. Much used for salads and flavoring, also for canning. Ripens late and when fully matured the Peppers are a bright red color and very attractive. Pkt., 10c; oz., 40c; $\frac{1}{4}$ lb., \$1.25; lb., \$4.50.

PURLANE

(DUTCH POSTELEIN)

Much used in France, Belgium and Holland for greens. Grows about 10 to 12 inches high. The stems are of a reddish color and have a peculiar sour taste. Likes a well prepared seed bed and a sunny location. Pkt., 5c; oz., 25c; $\frac{1}{4}$ lb., 75c; lb., \$2.50.



Bull Nose Pepper.

RADISH

SUMMER VARIETIES

EARLY SCARLET GLOBE. Standard sort for the home and market; for forcing and garden culture. Flesh is crisp and tender, rich scarlet color. Pkt., 5c; oz., 10c; $\frac{1}{4}$ lb., 25c; lb., 75c.

FRENCH BREAKFAST. An old favorite for market and home garden. Grows oblong in shape; a beautiful scarlet color with white tip; very tender. Pkt., 5c; oz., 10c; $\frac{1}{4}$ lb., 25c; lb., 75c.

ICICLE. Long, slender, pure white roots; mild and crisp. In big demand in local markets. Pkt., 5c; oz., 10c; $\frac{1}{4}$ lb., 25c; lb., 75c.

EARLY WHITE TURNIP. A popular early white turnip-shaped radish of medium size. Waxy white color; excellent flavor. Pkt., 5c; oz., 10c; $\frac{1}{4}$ lb., 25c; lb., 75c.

LONG SCARLET SHORT TOP. An old standard variety for the market and home garden. Roots are long, straight, smooth, and deep scarlet color; very crisp. Easily grown. Pkt., 5c; oz., 10c; $\frac{1}{4}$ lb., 25c; lb., 75c.

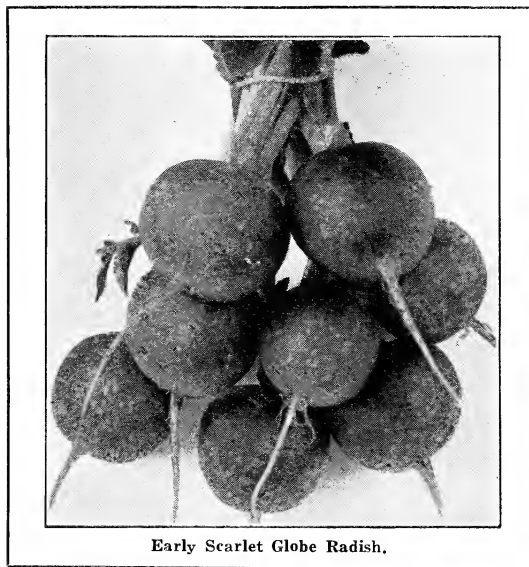
CRIMSON GIANT. This is a near-early radish double the size of the ordinary radish. Equally suitable for forcing or planting outdoors. Mild in flavor, firm and crisp. Pkt., 5c; oz., 10c; $\frac{1}{4}$ lb., 25c; lb., 75c.

WINTER VARIETIES

CHINA ROSE. More used than any other Winter radish. Flesh white and mild. By packing these in sand fresh radishes may be had all Winter. Pkt., 5c; oz., 10c; $\frac{1}{4}$ lb., 25c; lb., 75c.

ROUND BLACK SPANISH. An excellent keeper. Flesh is crisp and quite pungent. Shape is round; coal black skin and white flesh. Pkt., 5c; oz., 10c; $\frac{1}{4}$ lb., 25c; lb., 75c.

CELESTIAL or MAMMOTH WHITE CHINA. The finest of all large Winter radishes. Pure white skin; flesh solid, crisp and sweet as turnip. Pkt., 5c; oz., 10c; $\frac{1}{4}$ lb., 25c; lb., 75c.



Early Scarlet Globe Radish.

PUMPKIN

Not so particular as to soil as other vine crops; cultivate the same as cucumbers. One ounce of seed to 25 hills, 3 to 4 lbs. to the acre.

CONNECTICUT FIELD or BIG TOM. A standard variety grown in cornfields to make a feeding crop for cattle. Vines are strong and vigorous and wonderfully prolific. Fruits average 15 to 20 inches in diameter. Pkt., 5c; oz., 10c; $\frac{1}{4}$ lb., 25c; lb., 75c.

SUGAR or PIE. This is the pumpkin from which the celebrated Yankee Pumpkin Pie is made. Fruits about 10 inches in diameter. Skin is deep orange yellow. Fine grained flesh of excellent flavor. Excellent keeper. Pkt., 5c; oz., 15c; $\frac{1}{4}$ lb., 35c; lb., \$1.20.

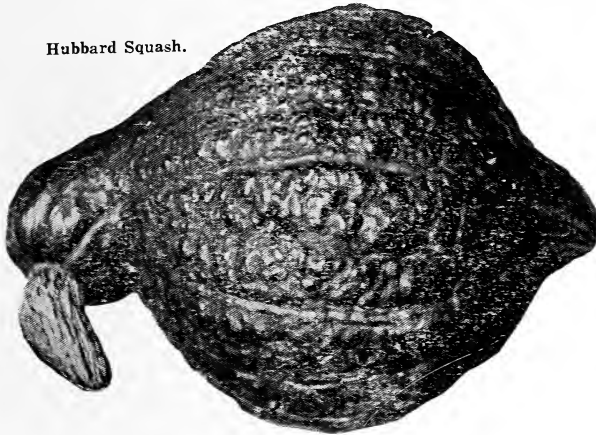
SALSIFY or Vegetable Oysters

MAMMOTH SANDWICH ISLAND. Improved type, producing roots of extra large size, superior quality, delicate flavor. Pkt., 5c; oz., 25c; $\frac{1}{4}$ lb., 75c; lb., \$2.25.



Big Tom Pumpkin.

Hubbard Squash.



SQUASH

Rich, warm, mellow soil is best for big yield and early maturity, but squashes grow quite well in almost any well drained soil. 1 ounce of bush varieties will plant 40 hills; larger seeded kinds 15 hills; 2 to 4 lbs. to the acre.

SUMMER VARIETIES

GIANT SUMMER CROOKNECK. A favorite with market gardeners, because of its beautiful appearance and ready sale. A great improvement over the old Yellow Crookneck. Pkt., 5c; oz., 15c; ¼ lb., 35c; lb., \$1.25.

EARLY WHITE BUSH SCALLOP. A well-known variety, sometimes called Patty Pan. Very early and prolific. Pkt., 5c; oz., 15c; ¼ lb., 35c; lb., \$1.25.

EARLY YELLOW BUSH SCALLOP. This is a new, rich golden yellow scalloped Summer squash, otherwise similar to the White Bush Scallop. Pkt., 5c; oz., 15c; ¼ lb., 35c; lb., \$1.25.

WINTER VARIETIES

DELICIOUS. It is a very early Winter variety of medium size, shaped like a top; dark green shell, moderately hard but very thin. Flesh fine grain and bright yellow; delicious sweet flavor. Pkt., 5c; oz., 15c; ¼ lb., 40c; lb., \$1.50.



The New Table Queen Squash.

HUBBARD. This is the old standard variety that everybody knows. Equally desirable for home and market garden. Pkt., 5c; oz., 15c; ¼ lb., 40c; lb., \$1.50.

CHICAGO WARTED HUBBARD. A new type of Hubbard produced by careful selection of the large dark green warted specimens. Flesh rich golden yellow, fine grained and dry. Popular with market men. Pkt., 5c; oz., 15c; ¼ lb., 40c; lb., \$1.50.

GOLDEN HUBBARD. The best Winter squash for the home garden. Same shape as green Hubbard but earlier. Keeps well throughout the Winter. Delicious flavor. Pkt., 5c; oz., 15c; ¼ lb., 40c; lb., \$1.50.

TABLE QUEEN. This wonderful little squash is becoming a great favorite everywhere. The fruits are a nice size to handle, about 6 to 8 inches long and 4 to 5 inches in diameter. Cut in half and baked for twenty minutes it will give you a delicious dish. Color is dark green and it is a heavy yielder and good keeper. Do not fail to plant some seeds of this variety. Pkt., 5c; oz., 15c; ¼ lb., 40c; lb., \$1.50.

SPINACH

For early Spring use sow in the Autumn. Protect the plants with a light covering of leaves or straw. One ounce of seed to 50 feet of drill; 10 to 25 lbs. per acre of drill.

BLOOMSDALE or SAVOY LEAF. An early variety and one of the best varieties to plant in the Autumn for early Spring use. Narrow, pointed, deep green leaves which are slightly curled. Pkt., 5c; oz., 5c; ¼ lb., 15c; lb., 35c.

EARLY GIANT THICK LEAF. This variety grows very rapidly, forming a cluster of large, very thick leaves of excellent color and quality. Pkt., 5c; oz., 5c; ¼ lb., 15c; lb., 35c.

KING OF DENMARK. This is the best sort for the market. Plants grow rapidly and are ready to use as soon as the earliest kind and yet remain in good condition two weeks longer. Pkt., 5c; oz., 5c; ¼ lb., 15c; lb., 40c.

NEW ZEALAND. Best for home garden. Will stand the Summer heat and keep on bearing luscious green shoots two weeks after others have gone to seed. Pkt., 5c; oz., 10c; ¼ lb., 25c; lb., 75c.

TURNIPS

Turnips do the best in a highly enriched or sandy loamy soil. One ounce will sow 125 feet of drill; 2 lbs. per acre in drills, 3 lbs. broadcast.

WHITE FLESH VARIETIES

EARLY PURPLE TOP STRAP-LEAVED. A quick grower. Flesh is fine grain and sweet flavor. Planted large, 10 table use. May be sown broadcast or in drills. Forms good sized bulbs in 7 to 8 weeks. Pkt., 5c; oz., 10c; ¼ lb., 20c; lb., 60c.

PURPLE TOP WHITE GLOBE. One of the handsomest and most salable turnips. Desirable for either home or market. Flesh pure white, fine grain; of excellent flavor. Splendid keeper. Ready market in this section. Pkt., 5c; oz., 10c; ¼ lb., 20c; lb., 60c.

WHITE EGG. Popular early turnip; adapted for either Spring or Fall sowing. Roots are egg-shaped; flesh is sweet and firm; a good keeper. Pkt., 5c; oz., 10c; ¼ lb., 20c; lb., 60c.

LONG WHITE COW HORN. A great field turnip, carrot-like in form, growing half out of the ground. Fine quality and a good keeper. Planted extensively for stock feed. Pkt., 5c; oz., 10c; ¼ lb., 20c; lb., 60c.

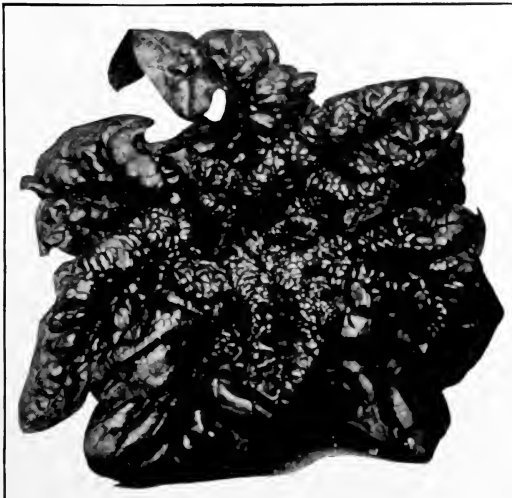
YELLOW FLESH VARIETIES

GOLDEN BALL or ORANGE JELLY. A distinct yellow turnip that is grown extensively for home consumption on account of its fine quality. Medium size, small tap root. Ready in 65 days. Pkt., 5c; oz., 10c; ¼ lb., 20c; lb., 60c.

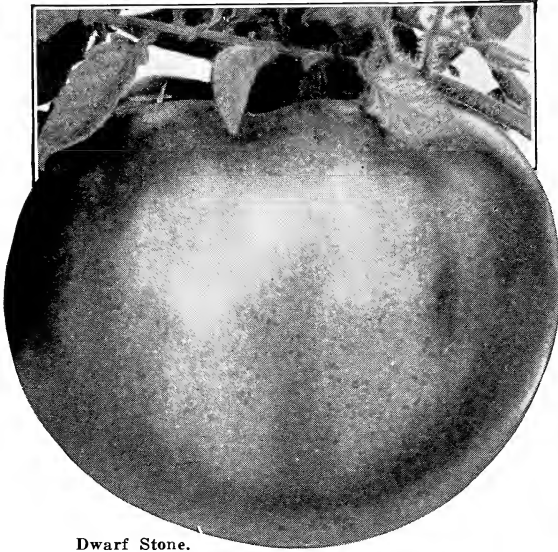
RUTABAGAS or SWEDES

Rutabagas require a longer season for maturing than turnips, hence should be sown earlier, about the middle of June.

AMERICAN PURPLE TOP. An old standard variety. Large roots; yellow color with purple top. Fine quality and a good yielder. Pkt., 5c; oz., 10c; ¼ lb., 20c; lb., 60c.



Bloomsdale or Savoy Leaf Spinach.



Dwarf Stone.

EARLIANA. Very popular extra early sort. Plants are of compact growth and yield well. Fruit solid, fine quality, and bright red. Ready for market in 90 days. Pkt., 5c; oz., 25c; ¼ lb., 80c; lb., \$3.00.

EARLIANA SPECIAL STOCK. This is an improvement over the old strain of Earliana. It ripens very early and produces nice smooth tomatoes of a bright red color. Heavy yielder. Pkt., 5c; oz., 30c; ¼ lb., \$1.10; lb., \$4.00.

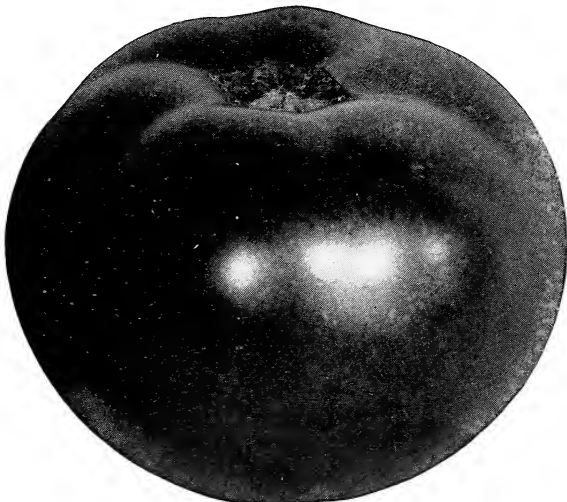
JOHN BAER. One of the best main crop sorts. Deep glossy red; ripens evenly and will not burst when dead ripe. Excellent shipper. Pkt., 5c; oz., 25c; ¼ lb., 80c; lb., \$3.00.

NEW ALPHA PINK. Very earliest pink tomato. Superior table quality; handsome in shape; vigorous grower. Ready for market in 90 days. Pkt., 5c; oz., 40c; ¼ lb., \$1.50; lb., \$5.00.

PONDEROSA. Often called Beefsteak on account of its blood-red flesh color. Unsurpassed in size and fine quality for slicing. Pkt., 5c; oz., 40c; ¼ lb., \$1.50; lb., \$5.00.

GOLDEN QUEEN. Best yellow variety. Handsome fruit; good size; smooth, solid, and meaty. Mild in flavor; color a bright yellow. Grown principally for home use and exhibition. Pkt., 5c; oz., 40c; ¼ lb., \$1.50; lb., \$5.00.

YELLOW PLUM. Grown principally for preserving. Size and shape similar to the plum, with smooth yellow skin. Pkt., 5c; oz., 40c; ¼ lb., \$1.50; lb., \$5.00.



John Baer Tomato.

TOBACCO

HAVANA. Well known broad-leaved cigar tobacco. Pkt., 5c; oz., 50c; ¼ lb., \$1.40; lb., \$5.00.

TOMATOES

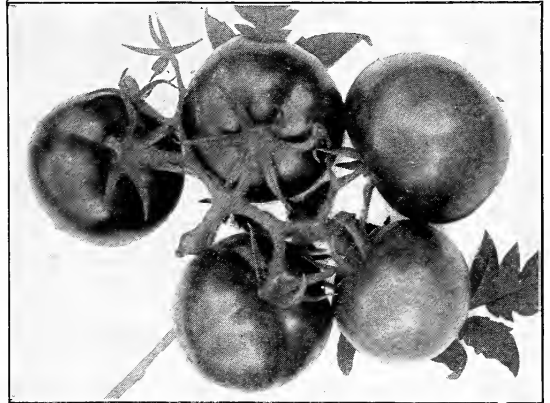
Our seed is selected from tomatoes that have been grown and selected for seed only. Sow the seed in March and April in hotbed or in pot in a sunny exposure in the house. If stocky plants are desired they may be transplanted into a cold frame or greenhouse when 2 or 3 inches high. When 5 or 6 inches high and when the ground has become warm transplant into the open.

BONNY BEST. Splendid large second early tomato. Vigorous grower, splendid foliage; intense scarlet color; remarkably uniform in size. Pkt., 5c; oz., 25c; ¼ lb., 80c; lb., \$3.00.

CHALK'S EARLY JEWEL. Another popular second early variety. Handsome bright red fruit, very solid. Has few cracks. First-class for home garden. Ready for market in 95 days. Pkt., 5c; oz., 25c; ¼ lb., 80c; lb., \$3.00.

LIVINGSTON'S GLOBE. An extra good all-around sort of a distinct globe shape. Ripens evenly; has few seeds. Excellent main crop. Ready for market in 100 days. Pkt., 5c; oz., 40c; ¼ lb., \$1.50; lb., \$5.00.

DWARF STONE. This splendid tomato has all the fine qualities of the standard and much grown Stone, except it is somewhat dwarf in habit. Popular with market gardeners and home canners. Pkt., 5c; oz., 40c; ¼ lb., \$1.50; lb., \$5.00.



Bonny Best Tomatoes.

HERBS

For flavoring soups, meats, etc. A few sweet herbs should be grown in every garden. Cultural directions on every packet.

ANISE. Seed used for medicinal purposes; leaves are used for flavoring, garnishing, and cordials. Pkt., 5c; oz., 15c; ¼ lb., 40c; lb., \$1.25.

CARAWAY. Seed is used for flavoring rye bread, making cheese, also flavoring sauces. Pkt., 5c; oz., 10c; ¼ lb., 30c; lb., \$1.00.

CORIANDER. Seed used for flavor in baking and making candy. Pkt., 5c; oz., 15c; ¼ lb., 25c; lb., 75c.

DILL. Leaves and seed heads used for making dill pickles. Fine for flavoring soup. Pkt., 5c; oz., 10c; ¼ lb., 30c; lb., 90c.

FENNEL. The leaves boiled are used in fish sauces also for garnishing; seeds for flavoring and medicinal purposes. Pkt., 5c; oz., 20c; ¼ lb., 60c; lb., \$1.75.

SAGE. Leaves and tops used for seasoning and stuffing; also for medicinal purposes. Pkt., 5c; oz., 30c; ¼ lb., 90c; lb., \$3.00.

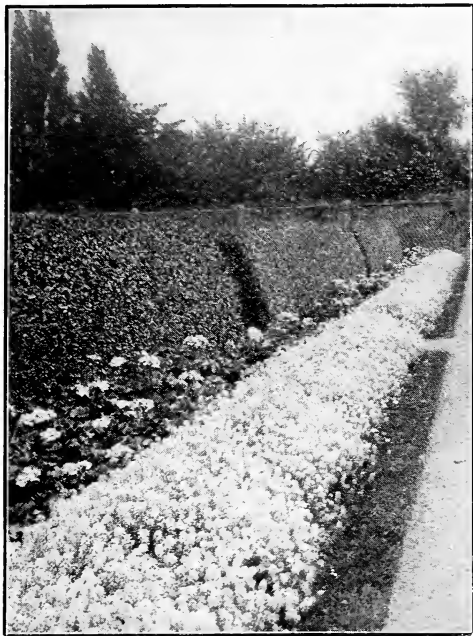
SUMMER SAVORY. Leaves and young shoots are used for flavoring, especially for boiled and string beans. Pkt., 5c; oz., 20c; ¼ lb., 60c; lb., \$2.00.

SWEET MARJORAM. Leaves and ends of shoots are used for flavoring both green and dried. Pkt., 5c; oz., 25c; ¼ lb., 80c; lb., \$2.25.

THYME. Used for seasoning. A tea is also made for nervous headache. Pkt., 5c; oz., 40c; ¼ lb., \$1.10; lb., \$4.00.



Dill Seed Heads.



Alyssum.

Flower Seeds

Our Complete Stock is New and Fresh

AGERATUM or Floss Flower

An annual; very hardy, of easy culture; fine for bedding. It is almost covered with blossoms all Summer. Sow in boxes early in the Spring or out in the open when danger of frost is past.

MEXICANUM DWARF BLUE. Pkt., 5c; ¼ oz., 20c; oz., 60c.

MEXICANUM WHITE. Pkt., 5c; ¼ oz., 20c; oz., 60c.

MEXICANUM MIXED. Pkt., 5c; ¼ oz., 20c; oz., 60c.

ALYSSUM

A fragrant hardy annual bearing spikes of beautiful small flowers in great profusion throughout the Spring and Summer. Without a doubt the best border plant in our selection. Beautiful when planted in solid beds.

LITTLE GEM. Popular border sort: white flowers. Pkt., 5c; ¼ oz., 20c; oz., 60c.

SWEET ALYSSUM. Very sweet scented: white flowers. Pkt., 5c; ¼ oz., 15c; oz., 50c.

SAXATILE. Similar to above, but yellow flowers. Pkt., 10c; ¼ oz., 40c; oz., \$1.50.

AMARANTHUS

An odd plant of many colors, being useful for tall borders and grouping with other foliage. The leaves and stems are of different shades of red blended with green. Usually growing from 2 to 3 feet high. Sow seed early in the Spring. Pkt., 5c; ¼ oz., 15c; oz., 45c.

ANCHUSA

One of the best hardy perennials: lovely Gentian blue. A great improvement over old variety. Pkt., 10c; ¼ oz., 50c; oz., \$1.50.

ANTIRRHINUM. (See Snapdragon).

AQUILEGIA. (See Columbine).

ARABIS - Rock Cress

ALPINA. A most useful hardy perennial for Spring bedding and rockeries. Early in the Spring the pure white flowers make a pleasing sight in beds and borders. Grows about 6 inches high. Pkt., 10c; ¼ oz., 50c; oz., \$1.75.

ASTERS

Asters are flowers of wonderful beauty. They are also easy to grow. Plants are hardy and will stand light frost. Can be sown out-of-doors as soon as the ground is warm and dry. The plants can also be started in the house or in a cold frame and transplanted as soon as weather permits.

AMERICAN BEAUTY, Crimson. Pkt., 10c; ¼ oz., 60c; oz., \$2.00.

AMERICAN BEAUTY, September Beauty. Delicate flesh pink. Pkt., 10c; ¼ oz., 60c; oz., \$2.00.

AMERICAN BEAUTY, White Beauty. Giant white. Pkt., 10c; ¼ oz., 60c; oz., \$2.00.

AMERICAN BEAUTY (Rose Color). Pkt., 10c; ¼ oz., 60c; oz., \$2.00.

AMERICAN BEAUTY (Mixed Colors). Pkt., 10c; ¼ oz., 60c; oz., \$2.00.

GIANTS OF CALIFORNIA. The best Asters on the market today. Originated by a California seed grower and specialist in Asters. They combine the robust habit of growth and length of stem of the Beauty type and the large fluffy Crego type of flowers. No garden should be without these beautiful flowers. White, light blue, deep rose, dark purple and mixed colors. (In ordering please state color wanted). Pkt., 20c; ¼ oz., \$1.25; oz., \$4.00.

GIANT COMET. Mixed colors. Pkt., 10c; ¼ oz., 50c; oz., \$1.50.

CREGO MAMMOTH. Mixed colors. Pkt., 10c; ¼ oz., 50c; oz., \$1.50.

QUEEN OF THE MARKET. Mixed colors. Pkt., 10c; ¼ oz., 50c; oz., \$1.50.

OSTRICH FEATHER. Mixed colors. Pkt., 10c; ¼ oz., 60c; oz., \$2.00.

PEONY-FLOWERED. Mixed colors. Pkt., 10c; ¼ oz., 75c; oz., \$2.50.

KING or NEEDLE. Mixed colors. Pkt., 10c; ¼ oz., 60c; oz., \$1.75.

AMERICAN BRANCHING. Choice of colors: White, Deep Pink, Light Pink, Red, Light Blue, Dark Blue, Lavender, and mixed colors. (Be sure to specify color wanted when ordering). Pkt., 10c; ¼ oz., 50c; oz., \$1.50.

BALL'S WHITE. The finest white aster in existence. Pkt., 10c; ¼ oz., 65c; oz., \$2.50.

CRIMSON GIANT. Large bright crimson: very showy. Pkt., 10c; ¼ oz., 60c; oz., \$2.00.

CARLSON'S INVINCIBLE. Mixed colors. Pkt., 10c; ¼ oz., 50c; oz., \$1.50.

HEART OF FRANCE. A new aster of rich, dark, ruby red color. Flowers are quite large and double. Very beautiful: give it a trial. Pkt., 10c; ¼ oz., 60c; oz., \$2.00.

NEW FANCY YELLOW. A large sulphur yellow aster: very beautiful. Pkt., 10c; ¼ oz., 65c; oz., \$2.50. Cannot supply this year.

FURNITURE CITY MIXTURE. This mixture is of the finest type of asters and the best colors. An excellent selection indeed. Pkt., 10c; ¼ oz., 65c; oz., \$2.25.

BALSAM or Lady Slipper

One of the showiest of annuals. Easy to grow, plants growing 15 to 24 inches high. Produce a good abundance of flower sprays.

DOUBLE CAMELIA-FLOWERED. Mixed colors. Pkt., 5c; ¼ oz., 20c; oz., 60c.



Giant Comet Asters.

CENTAUREA or Bachelor Button

The widely grown flower, known also as Bachelor's Button. They are beautiful; an effective plant for beds and borders, being a hardy annual. Require little care and usually reseed themselves.

CHOICE DOUBLE MIXED. Pkt., 5c; ¼ oz., 20c; oz., 50c.

CHOICE DOUBLE BLUE. Pkt., 10c; ¼ oz., 20c; oz., 60c.

CALENDULA

An old-fashioned popular flower that has been greatly improved in recent years. Easy to grow, succeeding well in most any soil. Blooms profusely from early Spring to late Fall.

CHOICE DOUBLE MIXED. Pkt., 5c; ¼ oz., 15c; oz., 40c.

ORANGE KING. Very large orange. Pkt., 10c; ¼ oz., 25c; oz., 70c.

BALL'S VERY LARGE DARK ORANGE. Pkt., 10c; ¼ oz., 50c; oz., \$1.50.

CALLIOPSIS

This is a showy and beautiful free-flowering annual, of the easiest culture, doing well in any sunny position. Blooming all Summer. 15 to 20 inches high. Excellent for cut flowers.

TALL DOUBLE MIXED. Pkt., 5c; ¼ oz., 20c; oz., 70c.

CANDYTUFT

An old annual that has been vastly improved. It has clusters of flowers somewhat resembling annual phlox.

EMPRESS. Pure white. Pkt., 5c; ¼ oz., 20c; oz., 70c.

CHOICE MIXED COLORS. Pkt., 5c; ¼ oz., 20c; oz., 60c.

CANNAS

These are fine for decorative effect on the lawn. They are tropical looking. The dark green leaves and gorgeous blooms make a beautiful sight. Plant in rich moist soil when weather is warm and settled.

NEWEST HYBRIDS. Mixed colors. Pkt., 10c; ¼ oz., 20c; oz., 50c.

CANTERBURY BELLS or Campanula

A hardy biennial, growing 2 feet high. Flowers in June and July.

SINGLE FLOWERING VARIETIES. Choice mixed. Pkt., 10c; ¼ oz., 25c; oz., 75c.

DOUBLE FLOWERING VARIETIES. Choice mixed. Pkt., 10c; ¼ oz., 40c; oz., \$1.50.

CUP AND SAUCER. Mixed colors. Pkt., 10c; ¼ oz., 75c; oz., \$2.50.



Candytuft.

CARDINAL CLIMBER

Leaves are like Cypress Vine, but the flowers are like little scarlet Morning Glories. Pkt., 10c; ¼ oz., 65c; oz., \$2.00.

CARNATIONS

Beautiful and fragrant; easily grown outdoors. Highly prized as a decorative flower for beds and borders.

LARGE DOUBLE FLOWERING VARIETIES. Choice mixture. Pkt., 10c; ¼ oz., 60c; oz., \$2.00.

CASTOR BEANS

Can be used to secure semi-tropical effects. Plants are tall and majestic, growing 8 to 12 feet high.

ZANZIBARIENSIS. Large mixed. Pkt., 10c; ¼ oz., 10c; oz., 25c.

CHRYSANTHEMUM

Showy and very effective garden annual, of easy culture. The plant grows from 12 to 14 inches high; has fine delicate foliage; splendid for cutting.

TALL DOUBLE FLOWERING. Mixed colors. Pkt., 5c; ¼ oz., 15c; oz., 50c.

TALL SINGLE FLOWERING. Mixed colors. Pkt., 5c; ¼ oz., 15c; oz., 50c.

CLARKIA

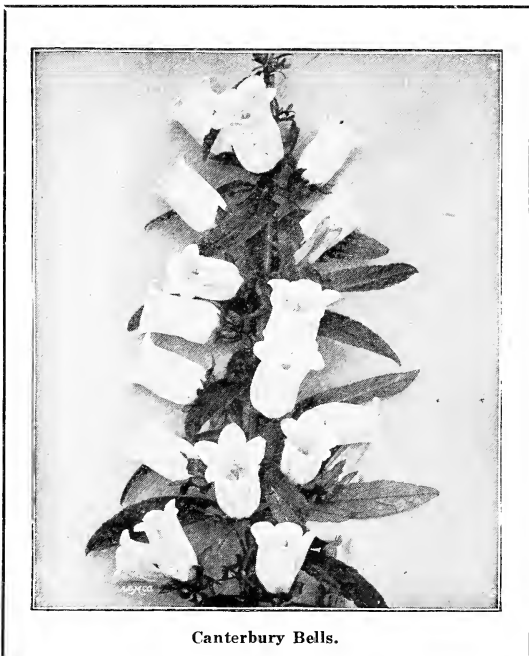
Exceedingly bright and attractive, especially in large masses.

CHOICE DOUBLE FLOWERING. Mixed colors. Pkt., 5c; ¼ oz., 20c; oz., 60c.

CATHEDRAL BELLS

(COBAEA SCANDENS)

A beautiful perennial vine with violet blue bell-like flowers. Desirable for covering trellises, verandas, etc. Pkt., 10c; ¼ oz., 20c; oz., 70c.



Canterbury Bells.



Columbine.

COCKSCOMB
(CELOSIA)

Free flowering highly ornamental plants, of easy culture. Flowering season June to November.

GIANT EMPRESS. Large red combs. Pkt., 10c; ¼ oz., 75c; oz., \$2.50.

GLASGOW PRIZE. Large purple red combs. Pkt., 10c; ¼ oz., 75c; oz., \$2.50.

TALL CRIMSON. Tall plants with crimson red combs. Pkt., 10c; ¼ oz., 40c; oz., \$1.25.

TALL MIXED. Pkt., 10c; ¼ oz., 40c; oz., \$1.25.

CHINESE WOOLFLOWER
(CELOSIA CHILDSI)

A variety of Cockscomb. Plants grow 2 to 3 feet high and bloom early. Scores of branches, each bearing a ball of wool.

RED. Pkt., 10c; ¼ oz., 75c; oz., \$2.50.

MIXED. Pkt., 10c; ¼ oz., 75c; oz., \$2.50.

COLEUS

Most popular of all foliage plants. Fine for borders. Pkt., 25c.

COLUMBINE
(AQUILEGIA)

Foremost among the choice garden perennials. They are a native of every state in the union. Large flowers, long spurred.

MRS. SCOTT ELLIOTT'S STRAIN. Pkt., 25c; ¼ oz., \$1.75; oz., \$6.00.

COREOPSIS

These long lasting flowers are simply beautiful, measuring 3 inches and over in diameter, borne on stalks 15 to 18 inches. Brilliant golden yellow. Pkt., 5c; ¼ oz., 25c; oz., 75c.

COSMOS

This rapid growing Autumn-flowering annual produces large bushes sometimes 6 feet high. Begins to bloom in August and from that time until November they are covered with a mass of bloom. The flowers are 2 inches in diameter.

EXTRA EARLY LARGE FLOWERING. Mixed colors. Pkt., 10c; ¼ oz., 20c; oz., 70c.

NEW DOUBLE FLOWERING. Mixed colors. Pkt., 25c.

DAHLIAS

But few people know that Dahlias can be raised from seed and will bloom the first year. The seeds germinate easily and from the very first are strong and sturdy little plants. Plant them in shallow boxes early in March or April and transplant them as their growth demands. When danger of frost is past plant them in the bed or border in the garden and from then on they will prove no more trouble than if the tubers had been used instead of the seed. Pkt., 25c.

DAISIES

The old garden favorite. Our seeds are from selected sorts. **CHOICE DOUBLE VARIETIES.** Mixed colors. Pkt., 10c; ¼ oz., 75c; oz., \$2.50.

SHASTA DAISY. Large flowering. Pkt., 10c; ¼ oz., \$1.00; oz., \$3.25.

AFRICAN DAISY. Pkt., 10c; ¼ oz., 40c; oz., \$1.40.

DATURA or Sweet Nightingale

A large strong plant with trumpet-shaped fragrant white flowers, 3 feet high. Pkt., 5c; ¼ oz., 20c; oz., 60c.

DIANTHUS or Pinks

These beautiful old-fashioned favorites come from the same family carnations do, but are more varied in their brilliant colors.

ANNUAL CHOICE DOUBLE. Mixed colors. Pkt., 10c; ¼ oz., 35c; oz., \$1.00.

PERENNIAL CHOICE DOUBLE. Mixed colors. Pkt., 10c; ¼ oz., 65c; oz., \$2.00.

ESCHSCHOLTZIA
or California Poppy

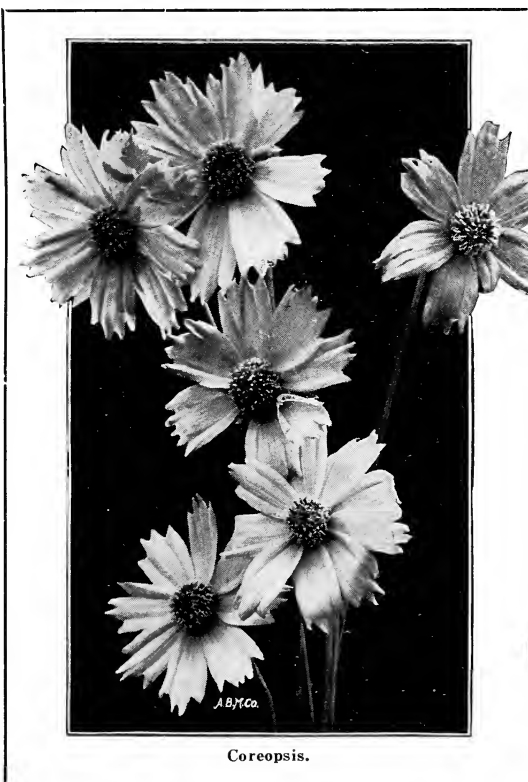
A hardy free-flowering annual, growing about 15 inches high and producing quantities of single poppy-shaped blooms.

GOLDEN YELLOW. Pkt., 5c; ¼ oz., 20c; oz., 60c.

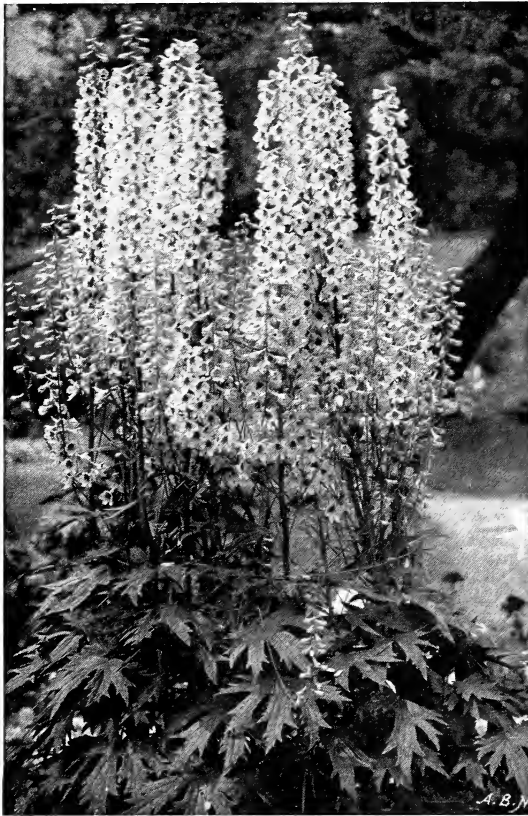
CHOICE MIXED. Pkt., 5c; ¼ oz., 35c; oz., \$1.00.

FORGET-ME-NOT

Dainty elegant little flowers; blooms profusely for two seasons, flowering freely in the early Spring and Fall. They love shady moist places. Once at home in a garden, they show themselves by self-seeding. Pkt., 10c; ¼ oz., 35c; oz., \$1.25.



Coreopsis.



Larkspur—Delphinium.

FOUR O'CLOCK

A well known hardy annual, succeeding anywhere. Covered with hundreds of bright colored, showy, sweet scented flowers.

CHOICE MIXTURE. Pkt., 5c; ¼ oz., 10c; oz., 25c.

FOXGLOVE or Digitalis

Ornamental hardy plants of stately growth. Plants succeed well in any soil if given shady location. Spikes are 3 to 4 feet long, strung with scores of thimble-shaped flowers. Pkt., 10c; ¼ oz., 35c; oz., \$1.00.

GAILLARDIA

These brilliant flowers grow in profusion throughout the Summer. Desirable for planting beds; excellent for cutting. **LARGE PERENNIAL VARIETY.** Pkt., 10c; ¼ oz., 35c; oz., \$1.00.

GODETIA

A charming annual growing about 1 foot high. Flowers all Summer, producing many shades and colors. **SUPERB MIXTURE.** Pkt., 5c; ¼ oz., 25c; oz., 75c.

GOURDS

(ORNAMENTAL)

The blossoms of some are quite striking and handsome. The interesting feature is the odd, unique, and ornamental gourds. Pkt., 5c; ¼ oz., 10c; oz., 30c.

GYPSOPHILA or Baby's Breath

Hardy perennial. Flowers are tiny and starlike, borne in feathery sprays, much esteemed for cut flowers. Pkt., 5c; ¼ oz., 15c; oz., 50c.

HELICHRYSUM. (See Strawflower).

HELIOTROPE

Delicate sweet scented flowers. Start seeds in box. **CHOICE MIXTURE.** Pkt., 10c; ¼ oz., 75c; oz., \$2.50.

HIBISCUS or Mallow

Beautiful tall growing plants with handsome foliage; large striking flowers. Pkt., 10c; ¼ oz., 30c; oz., \$1.00.

HOLLYHOCKS

One of the most majestic and desirable of hardy perennial plants. Tall stately spikes covered with clusters of large flowers of striking beauty.

LARGE DOUBLE. Mixed colors. Pkt., 10c; ¼ oz., 65c; oz., \$2.25.

JOB'S TEARS

The gray seeds, shined like a giant tear drop, are the joy of childhood for using as beads. Pkt., 5c; ¼ oz., 5c; oz., 20c.

KOCHIA

(MEXICAN FIRE BUSH)

Excellent for garden hedges or backgrounds. Pkt., 5c; ¼ oz., 15c; oz., 40c.

LARKSPUR or Delphinium

Delicate flowers of varied colors, growing on tall stately spikes.

TALL ANNUAL. Double, mixed colors. Pkt., 10c; ¼ oz., 20c; oz., 60c.

PERENNIAL CHOICE. Mixed colors. Pkt., 25c.

BELLADONNA. Light blue flowers. Pkt., 25c.

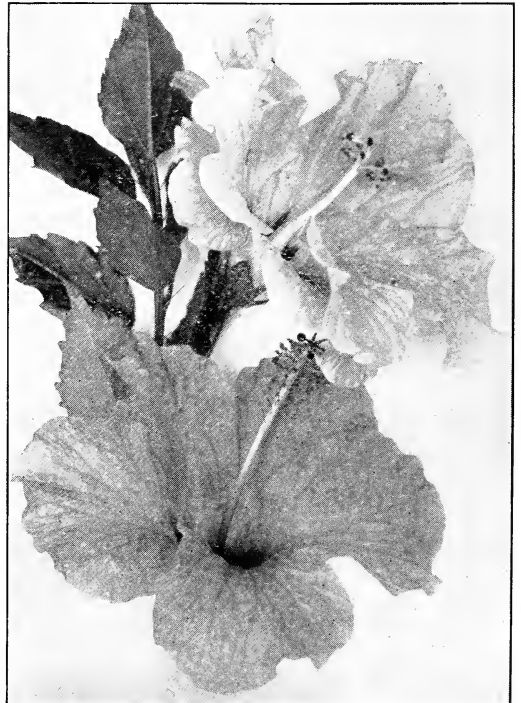
FORMOSUM. Dark blue flowers. Pkt., 25c.

LATHYRUS or Perennial Sweet Pea

A rapid growing vine which is covered through the late Summer with masses of flowers shaped somewhat like sweet peas. Pkt., 10c; ¼ oz., 40c; oz., \$1.30.

BLUE LACE FLOWER or Didiscus

Long stemmed blue flowers. Look like the lace on a lace handkerchief. Pkt., 10c; ¼ oz., 75c; oz., \$2.50.



Hibiscus—Mallovs.

LOBELIA

A marvelous shade of blue for your borders. Combines well with Alyssum.
MIXTURE OF CHOICE DWARF VARIETIES. Pkt., 10c; ¼ oz., 75c; oz., \$2.50.

LUPINUS

Perennial flowers growing on tall spikes.
White. Pkt., 10c; ¼ oz., 25c; oz., 75c.
Blue. Pkt., 10c; ¼ oz., 25c; oz., 75c.
Mixed Colors. Pkt., 10c; ¼ oz., 25c; oz., 75c.
Mixture of Annual Varieties. Pkt., 10c; ¼ oz., 25c; oz., 75c.

MARIGOLD

An old favorite annual. When grown in large beds they are very effective. Plants grow about 3 feet high and bloom clear up till frost.
ORANGE BALL. Large double flowers of a beautiful deep orange color, very fine. Pkt., 10c; ¼ oz., 30c; oz., \$1.00.
LEMON BALL. Same as above but of a lemon color. Pkt., 10c; ¼ oz., 30c; oz., \$1.00.
TALL AFRICAN DOUBLE. Mixed colors. Pkt., 10c; ¼ oz., 30c; oz., \$1.00.
DWARF FRENCH DOUBLE. Mixed colors. Pkt., 10c; ¼ oz., 30c; oz., \$1.00.

MIGNONETTE

A quick growing annual; delicate and fragrant; fine for bouquets. Pkt., 5c; ¼ oz., 15c; oz., 40c.

MOCNFLOWER

Blooms open at night and on cloudy days. Very fine.
Blue. Pkt., 10c; ¼ oz., 20c; oz., 60c.
White. Pkt., 10c; ¼ oz., 20c; oz., 75c.

MORNING GLORY

Most popular outdoor vine for covering windows, old stumps, etc.
COMMON VARIETIES. Mixed colors. Pkt., 5c; ¼ oz., 5c; oz., 15c.
JAPANESE. Large flowering. Mixed colors. Pkt., 5c; ¼ oz., 10c; oz., 25c.
HEAVENLY BLUE MORNING GLORY. Very large flowers of an attractive blue color. A great improvement over the common types of Morning Glories. Pkt., 10c; ¼ oz., 30c; oz., \$1.00.



Nasturtiums.

NASTURTIUMS

For ease in culture, duration of bloom, brilliancy of color, and general excellence, nothing exceeds Nasturtiums. Succeed well in any soil.
TALL CLIMBING VARIETIES. Mixed colors. Pkt., 5c and 10c; oz., 20c; ¼ lb., 50c; ½ lb., 90c; lb., \$1.50.
DWARF VARIETIES. Mixed colors. Pkt., 5c and 10c; oz., 20c; ¼ lb., 50c; ½ lb., 90c; lb., \$1.50.

NICOTIANA

Sweet scented tobacco plant. Loaded with hardy perfumed flowers throughout the season. Pkt., 5c; ¼ oz., 20c; oz., 50c.

NIGELLA

(LOVE-IN-A-MIST)

Grows an abundance of long stemmed flowers which are a most beautiful cornflower blue.
SELECT VARIETIES. Pkt., 5c; ¼ oz., 15c; oz., 50c.

PANSIES

Improved varieties produce rich colors with brilliant shadings. Require cool shady places, rich soil, and plenty of moisture.
TRIMARDEAU GIANT. Mixed colors. Pkt., 10c; ¼ oz., 75c; oz., \$2.25.
MASTERPIECE. Choice strain of large blossoms. Pkt., 10c; ¼ oz., \$1.75; oz., \$5.00.
GRAND RAPIDS SELECTED GIANT MIXTURE. This mixture contains all the beautiful types of the large flowering sorts; superb collection. Pkt., 15c; ¼ oz., \$2.00; oz., \$6.00.

PINKS

An old favorite, popular for beds and borders; in fact pinks fit nicely in any garden; easily grown.
DOUBLE FLOWERING ANNUAL VARIETIES. Mixed colors. Pkt., 10c; ¼ oz., 35c; oz., \$1.00.
DOUBLE FLOWERING PERENNIAL VARIETIES. Mixed colors. Pkt., 10c; ¼ oz., 65c; oz., \$2.00.



African Marigold.

PETUNIA

For freedom of bloom, variety of colors, beautiful effect, the Petunia ranks with the foremost. These handsome sweet-scented flowers are beautiful for borders, beds, and boxes.

SINGLE VARIETIES. Choice mixture of varied colors. Pkt., 5c; ¼ oz., 40c; oz., \$1.50.

GIANT SINGLE FRINGED VARIETY. Pkt., 25c.

DOUBLE FLOWERING VARIETY. Choice mixture. Pkt., 50c.

ROSY MORN. Beautiful clear pink. Much used for window and porch boxes. Pkt., 10c; ¼ oz., \$1.25; oz., \$4.00.

BALCONY PETUNIA. This new variety is strikingly handsome. Pkt., 20c.

ELK'S PRIDE. Large handsome purple flowers. Pkt., 25c.

PHLOX

Very popular because of the great range of colors. Unsurpassed for freedom of bloom.

DRUMMONDI (Annual). Mixed colors. Pkt., 10c; ¼ oz., 40c; oz., \$1.50.

LARGE FLOWERING PERENNIAL VARIETY. Mixed colors. Pkt., 10c; ¼ oz., \$1.00; oz., \$3.50.

POPPIES

Wonderful range of brilliant colors; becoming very popular. Do best in sandy loam. Keep flowers cut for continuous bloom.

DOUBLE SPRING FLOWERING. Mixed colors. Pkt., 5c; ¼ oz., 10c; oz., 30c.

SINGLE GIANT SHIRLEY POPPIES. Mixed colors. Pkt., 5c; ¼ oz., 20c; oz., 50c.

CALIFORNIA POPPIES. Golden Yellow. pkt., 5c; ¼ oz., 20c; oz., 60c. Choice Mixed Colors, pkt., 5c; ¼ oz., 35c; oz., \$1.00.

ORIENTAL POPPIES (Perennial). Pkt., 10c; ¼ oz., 60c; oz., \$2.00.

ICELAND POPPY (Perennial). Pkt., 10c; ¼ oz., 60c; oz., \$2.00.

PORTULACA or Rose Moss

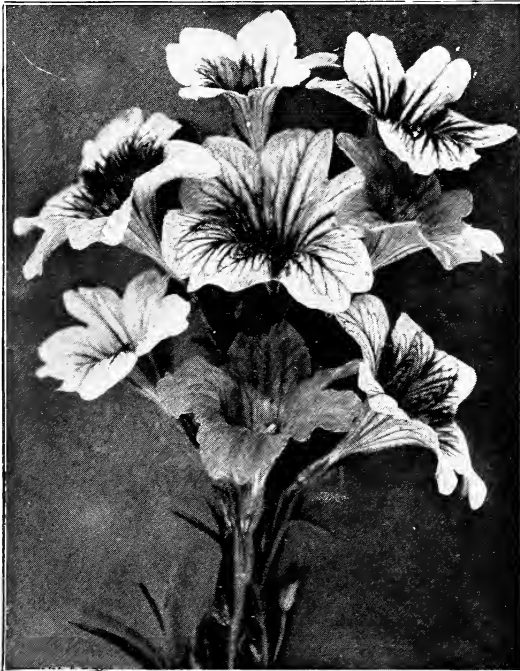
Forms masses of delicate green foliage covered with bright colored flowers.

DOUBLE, MIXED COLORS. Pkt., 10c; ¼ oz., \$1.25; oz., \$4.00.

PRIMROSE or Primula

Among the best of the early Spring blooming plants. They require a partially shaded location.

LARGE FLOWERING. Mixed colors. Pkt., 25c; ¼ oz., \$3.00; oz., \$10.00.



Salpiglossis—Painted Tongue.



Portulaca—Rose Moss.

PYRETHRUM

HYBRIDUM or PAINTED DAISY. Extra choice double and single varieties mixed. Pkt., 20c.

SALPIGLOSSIS or Painted Tongue

Flowers vividly marked, spotted and striped. **CHOICE MIXED COLORS.** Pkt., 10c; ¼ oz., 40c; oz., \$1.50.

SALVIA or Flowering Sage

The new large flowering Salvia is much more free flowering than old types; long spikes, bright flowers that keep their color from July until frost. Pkt., 10c; ¼ oz., 80c; oz., \$2.75.

SCABIOSA or Mourning Bride

About 2½ feet high; bloom early in July, continuing until hard frost; double flowers in exquisite shades borne on long wiry stems.

DOUBLE FLOWERING. Mixed colors. Pkt., 10c; ¼ oz., 20c; oz., 75c.

SCABIOSA, Caucasica (Perennial Scabiosa). Light blue flowers on long wiry stems. Fine for cutting. Blooms all Summer. Pkt., 15c.

SCARLET RUNNER BEAN

A well known rapid growing annual climber, producing bright red flowers from July to September. Its dense foliage makes it splendid for porches or any location where shade is desired. Pkt., 5c; ¼ lb., 15c; lb., 50c.

SCHIZANTHUS or Butterfly Flower

Beautiful plant for garden in Summer and for house culture in the Winter. Pkt., 10c; ¼ oz., 60c; oz., \$2.00.

SNAPDRAGON

GIANT FLOWERED MIXED. Dark, glossy leaves and long spikes of curiously shaped, brilliantly colored flowers with finely marked throats. Pkt., 10c; ¼ oz., 75c; oz., \$2.50.

SNOW-ON-THE-MOUNTAIN

(EUPHORBIA)

Showy border plant; easily grown; beautiful foliage edged and veined with white. Pkt., 5c; ¼ oz., 25c; oz., 75c.



Hercules Sweet Peas.

STOCKS

A popular fragrant colorful blooming annual. Used for beds and borders.

LARGE DOUBLE FLOWERING VARIETIES. Mixed colors. Pkt., 10c; ¼ oz., \$1.00; oz., \$3.25.

STRAWFLOWERS or Everlasting

Very popular and beautiful for winter bouquets. The brilliant colored flowers last indefinitely.

EXTRA LARGE DOUBLE MIXTURE. Pkt., 10c; ¼ oz., 30c; oz., \$1.00.

GLOBE AMARANTH. Mixed. Pkt., 10c; ¼ oz., 20c; oz., 50c.

GLOBE AMARANTH. Red. Pkt., 10c; ¼ oz., 20c; oz., 50c.

SUNFLOWER or Helianthus

These improved varieties are fine for wild gardens along fences or walls.

DOUBLE YELLOW CHRYSANTHEMUM. Pkt., 5c; ¼ oz., 20c; oz., 60c.

RED SUNFLOWER. Pkt., 5c; ¼ oz., 20c; oz., 60c.

STELLA (Large Yellow Flowers). Pkt., 5c; ¼ oz., 25c; oz., 70c.

SWEET PEAS

The improvement of this much fancied garden favorite continues, as splendid results are being secured. Their beauty and fragrance and delicate coloring put them in a class by themselves. Be sure to have some of these in your garden this year.

GRANDIFLORA VARIETIES. Mixed colors. Pkt., 5c; oz., 10c; ¼ lb., 30c; lb., \$1.00.

SPENCER LARGE FLOWERING VARIETIES. Mixed colors. A remarkable collection. Pkt., 10c; oz., 25c; ¼ lb., 80c; ½ lb., \$1.40; lb., \$2.50.

SPENCER TYPE. Named varieties. Be sure to mention variety wanted when ordering this item: Asta Ohn, lavender; Blanche Ferry, pink and white; Countess Spencer, rose-pink; Flora Norton, light blue; Hawlmark Pink, rose-pink shading to salmon; Hercules, giant size, pure pink; King Edward, crimson; King White, pure white; Margaret Atlee, rosy salmon-buff; Othello, deep maroon; Scarlet Emperor, red; Weidewood, dark blue. Choice of any variety. Pkt., 10c; oz., 30c; ¼ lb., \$1.00.

SWEET SULTAN

A charming flower. Delicate shadings; artistic thistle shaped blooms. Choice of the following colors: Rose, White, and Mixed. Be sure to mention color when ordering. Pkt., 10c; ¼ oz., 40c; oz., \$1.25.

SWEET WILLIAM

Another well known old-fashioned favorite. Flowers similar to pinks, only instead of one in a place they grow in heads like phlox.

EXTRA FINE DOUBLE FLOWERING. Mixed colors. Pkt., 10c; ¼ oz., 40c; oz., \$1.25.

NEWPORT PINK. Pkt., 10c; ¼ oz., 50c; oz., \$1.50.

TRITOMA or Red-hot Poker

Long spikes of scarlet-orange flowers from July to frost. Pkt., 10c; ¼ oz., 75c; oz., \$3.00.

VERBENA

No annual better known. Very desirable for massing in beds and flower boxes. Their cluster-form blooms are very attractive.

LARGE FLOWERING. Mixed colors. Pkt., 10c; ¼ oz., 60c; oz., \$2.00.

VIOLA ODORATA or Blue Sweet Violet

The true blue sweet violet. Very hardy. Plants highly prized for their fragrance. Seed germinates slowly. Succeeds best in half shaded location. Pkt., 10c; ¼ oz., \$1.25; oz., \$4.00.

WALLFLOWER

The delicate fragrance and beautiful color win the favor of everybody.

GOLDEN YELLOW. Pkt., 5c; ¼ oz., 15c; oz., 50c.

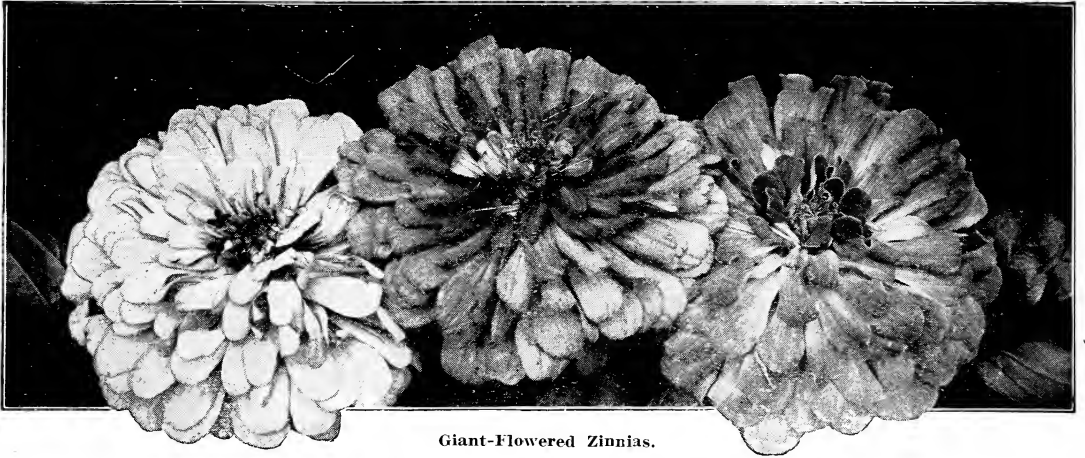
WILD CUCUMBER

This is the quickest growing climber in our list. Excellent for shading porches and windows. Pkt., 5c; ¼ oz., 10c; oz., 25c.

We also handle a full line of Sprayers and Spraying Material. If in the market for any of these goods we will be glad to quote you our best prices.



Verbenas.



Giant-Flowered Zinnias.

IMPROVED ZINNIAS

With the improved varieties being offered today, this beautiful flower is becoming more and more popular.

GIANT DOUBLE FLOWERING VARIETIES. This much admired type is easy to grow and we offer them in the following choice of colors: Apricot orange, burnt orange, golden yellow, canary yellow, red, lavender, pink, white, and mixed colors. Be sure and state color you want when ordering. Pkt., 10c; ¼ oz., 45c; oz., \$1.50.

GOLD MEDAL DAHLIA-FLOWERED. These beautiful zinnias, resembling a large double dahlia, are probably the most showy type and should be in every garden. Awarded a gold medal in 1924 by the Royal Horticultural Society of England. We offer the following choice of colors: **Exquisite**, light rose, center deep rose; **Golden State**, rich orange yellow; **Crimson Monarch**, red, extra large flowers; **Meteor**, rich glowing red; **Dream**, soft lavender, shading to purple; **Canary Bird**, primrose yellow; **Polar Bear**, pure white; **Purple Prince**, deep purple; **Lemon Beauty**, golden yellow on brownish ground; **Oriole**, orange and gold;

Mixed Varieties. Be sure to name the variety when ordering. Pkt., 20c; ¼ oz., 75c; oz., \$2.50.

VICTORY QUILLED or CACTUS FLOWERED. These beautiful new flowers resemble a cactus-flowered dahlia. Mixed Colors, pkt., 20c; ¼ oz., 75c; oz., \$2.50.

PICOOTEE. This is a distinct class with beautiful double flowers in orange, flesh, lemon, pink and cerise, each petal distinctly tipped with various shades of dark colors, resembling the *Picotée Carnations*. Reproduce about 70% true. Pkt., 15c; ¼ oz., 60c; oz., \$2.00.

LILLIPUT. The plants form handsome little bushes and are loaded with tiny, short-stemmed, very double flowers about the size of a daisy. They are much used for borders; bloom all Summer until late in the Fall. Mixed colors, pkt., 10c; ¼ oz., 50c; oz., \$1.50.

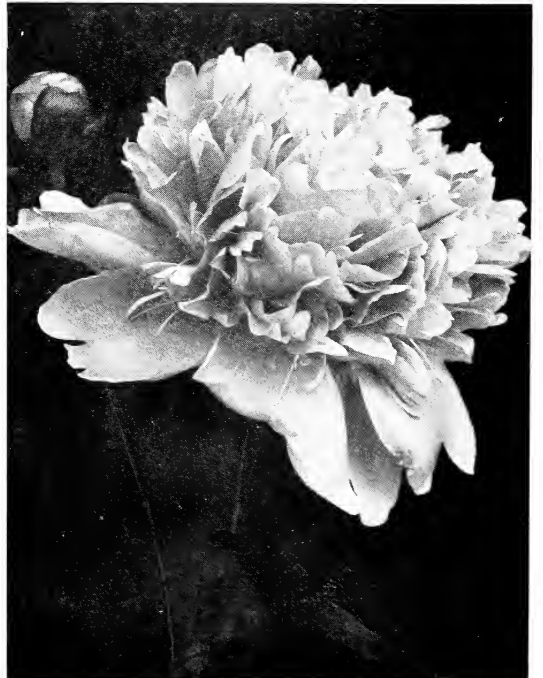
SALMON ROSE. Small very double flowers of a beautiful pink color. Much used in floral work. Pkt., 10c; ¼ oz., 50c; oz., \$1.50.

Bulbs for Spring Planting

PEONIES

The Peony is perhaps the oldest and best known inhabitant of the flower garden and rivals the rose in coloring and perfection of bloom. The flowers are perfectly double and very large. They are not troubled with insect pests or disease and the dark green foliage is exceptionally clean and attractive. Peonies will do well in almost any garden soil but the better enriched the soil and the more liberal the space allowed for each plant, the more vigorous the growth. In planting: the roots cover the eyes with about 2 or 3 inches of soil. A deep, lively loam is preferable and the ground about the plants should be worked well. Fall planting is the best although they can be planted in the Spring also.

- | | |
|--|---------------|
| FESTIVA MAXIMA. This is the most popular and beautiful White Peony. Flowers are extra large and of the double rose type. The edges of center petals are dotted with carmine spots. It is a free bloomer and very early | Each
\$.60 |
| EDULIS SUPERBA. This is one of the earliest varieties, usually coming into bloom on Decoration Day. Color is a brilliant rose pink. Flowers are large and double and very fragrant..... | .60 |
| FELIX CROUSSE. Brilliant dazzling red. Flowers are very double and solid, exceptionally bright and effective. None better..... | .75 |
| KARL ROSENFELD. Rich velvety bright red. Large flowers of the semi-rose type. A sturdy grower and free bloomer. Medium early. Considered one of the best all around red peonies..... | 1.50 |
| OFFICINALIS RUBRA PLENA. The old-fashioned red peony of our grandmother's garden. It is perhaps the earliest of all peonies, usually in full bloom before Decoration Day. Large double flowers of a rich dark red color | 1.25 |
| MONS. JULES ELIE. This is considered by many the finest of all peonies. Flowers are of immense size, full and globular in form. Wonderful glossy flesh-pink shading to deeper rose-pink at the base. When fully opened it looks like a giant Chrysanthemum. Fine cut flower | 1.25 |



Peony, *Edulis Superba*,

DAHLIAS

AMUN RA (Decorative). Immense flowers of gorgeous copper and orange tones shading to gold and amber, deepening in the center to a dark reddish brown the effect as a whole being that of a gorgeous sunset. Flowers keep well after being cut. Each, \$1.00.

COUNTESS OF LONSDALE (Cactus). The best known and most desired of all the Cactus Dahlias. The color is a pleasing deep salmon-red. A free bloomer. Each, 35c.

DR. TEVIS (Decorative). Large flowers of a soft salmon rose suffused with gold, shading to a golden apricot center. A grand exhibition variety. Each, 75c.

GLADYS SHERWOOD (Cactus). A wonderful white cactus variety. Enormous flowers having long glistening white pointed petals. Flowers are held erect on strong stems. A real queen among the white varieties. Each, \$1.00.

GOLDEN WEST (Decorative). A Burbank creation that is entirely distinct. Clear canary yellow of good size on strong stems. Very attractive. Each, 40c.

HOCHSAI (Decorative). A combination of martius yellow and scarlet producing a beautiful shade of golden orange-yellow. Large showy flowers which always attract attention. Each, 60c.

JACK ROSE (Decorative). A rich, deep ruby red, the whole overlaid with a soft velvety maroon. A great favorite among the dark red Dahlias. Each, 20c.

JERSEY'S BEAUTY (Decorative). Without a doubt the best true pink decorative Dahlia yet introduced. It has been an outstanding feature at the American and great European shows. The beautiful large pink flowers are of perfect form supported on long stiff stems. A great cut-flower variety and equally valuable for garden decoration. Each, \$1.00.

J. H. JACKSON (Cactus). "The Black Dahlia." One of the most satisfactory all around Cactus varieties. The color is deep velvety maroon, almost black. Large flowers. Each, 25c.

KALIF (Cactus). A truly majestic flower of perfect Cactus form. The color is pure scarlet-red. Flowers are large and held on strong, stiff stems. Each, 75c.

LA FAVORITA (Hybrid Cactus). A large hybrid cactus of a new and distinct coloring; deep brilliant orange flowers carried on long stems. Blooms are always of perfect form. Each, 75c.

LAWINE (Cactus). A large white, lightly suffused pink. A strong grower, early and profuse bloomer. Each, 20c.

LYNDHURST (Decorative). A brilliant light red, fine for cutting. An early and free bloomer on long stems. Each, 20c.

MAUDE ADAMS (Show). Ball shaped flowers of a white color, delicately suffused with pink. One of the best white and pink Show Dahlias and always satisfactory. Each, 35c.



Decorative Dahlia, Dr. Tevis.

MILLIONAIRE (Decorative). The color of this much admired Dahlia is a pleasing shade of lavender with a faint pink cast overshading, shading to almost white toward the center as it ages. The flowers are of immense size, sometimes measuring 10 to 12 inches across. Each, 60c.

MRS. CARL SALBACH (Decorative). A beauty from California which is seen at most of the Dahlia shows throughout the country. Extra large flowers of a pleasing mauve pink suffused white toward the center. Blooms are of perfect form held on long stems. Each, 75c.

MRS. I. DE VER WARNER (Decorative). A wonderful Dahlia that has justly gained a great reputation. The flowers are large and of perfect shape and of a pleasing mauve-pink color. It is an early and free bloomer. Each, 75c.

PATRICK O'MARA (Decorative). This fine new decorative variety was awarded a Gold Medal by the American Dahlia Society as the best Autumn shade variety. The flowers, supported on long stiff stems are of good size, perfect form, and in color a rich chrome-yellow with salmon-red suffusion. Each, 75c.

PAUL MICHAEL (Decorative). One of the sensational large Exhibition flowers that always attracts attention and which has twice been awarded the prize as the largest flower in California shows; petals at base curled and twisted, color pure gold, shaded orange-buff at center; free flowering. Each, 75c.

QUEEN MARY (Decorative). The flowers are a beautiful rose-pink with broad petals of great substance. Each, 25c.

QUEEN VICTORIA (Show). Also called Princess Victoria. Clear pure canary yellow without any other markings from bud to old age. Flowers are of very attractive shape. A free bloomer on first class stems. Each, 25c.

RED BEAUTY (Decorative). Here is a flower that certainly deserves its name. Remarkable for its large size and brilliancy of color. An intense oriental red with golden sheen cast. We have yet to see a red variety that can beat this one. Flowers are large and of perfect form on tall plants. Very fine indeed. Each, \$1.00.

ROSALIA STYLES (Peony-flowered). A beauty among the Peony-flowered Dahlias. Extra large flowers of beautiful form on long stiff stems. A wonderful live lustrous color—bright Tyrian pink. Strong plants of medium height. Has attracted the greatest attention wherever seen. Each, 75c.

SNOWBALL or STORM KING (Show). Pure white, round, ball-shaped flowers of good size on long stems. Very free bloomer. An old variety but still in great demand. Each, 15c.

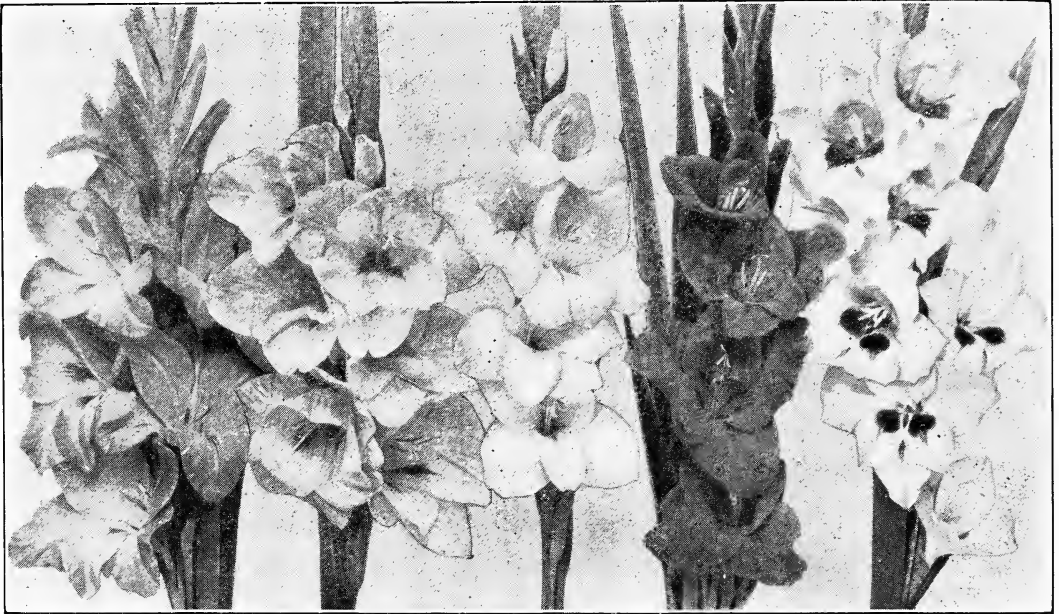
SOUVENIR DE GUSTAVE DOUZON (Decorative). A truly wonderful variety that couldn't produce small flowers if it tried. The color is an intense orange-red with rich crimson shadings. Good cut flower variety. Each, 30c.

VIVIAN (Show). A great favorite of an unusual color combination. Rose-violet shading to pure white toward the center. One of the best of the so-called variegated colored Dahlias. Each, 25c.

WILHELM MILLER (Decorative). The true purple colored Dahlia and a free bloomer. This variety is always in demand on account of its unusual color. Each, 20c.



Decorative Dahlia, Golden West.



Mrs. Francis King.

Glory of Kennemerland.

Peace.

Purple Glory.

Mrs. Frank Pendleton.

GLADIOLUS

ALICE TIPLADY. Beautiful orange saffron. Each, 10c; doz., \$1.00; per 100, \$7.00.

AMERICA. Soft lavender pink. Each, 5c; doz., 50c; per 100, \$3.25.

ANNA EBERIUS. Deep Rhodamine purple, throat deeper purple; large flowers on tall spikes. A great favorite. Each, 10c; doz., \$1.00; per 100, \$7.00.

BARON HULOT. Deep violet-indigo-blue-purple; the leading purple variety. Each, 12c; doz., \$1.25; per 100, \$8.00.

BENGAL TIGER. Rich red, mottled and black stripes throughout. An oriental beauty well deserving its name. Fine spike and bloom. Each, 15c; doz., \$1.50; per 100, \$10.00.

CAPTAIN BOYNTON. Beautiful lavender with dark blotches on lower petals; large flowers well placed on long stems. If you like lavender colors do not fail to plant a few of this variety this year. Each, 30c; doz., \$3.00.

CATHERINA. Lavender shading to deep lavender at the edges of petals with purple blotch in throat; very beautiful. Each, 15c; doz., \$1.60; per 100, \$12.00.

CHATEAU THIERRY. Bright scarlet-red with carmine blotch on yellow ground on lower petals; large wide open flowers of great attraction. Each, 10c; doz., \$1.00; per 100, \$7.00.

CHICAGO WHITE. Early white with lavender markings in throat. Each, 5c; doz., 50c; per 100, \$3.50.

CRIMSON GLOW. Very large, deep scarlet-red, tall strong spikes. One of the best reds. Each, 12c; doz., \$1.25; per 100, \$9.00.

DR. F. E. BENNETT. In our opinion this is the best red in existence and one of the most popular of the newer introductions. The color is an intense flame scarlet-red; flowers are very large and beautifully placed on strong stems. Many flowers open at a time, making it a grand exhibition variety. Each, 50c.

E. J. SHAYLOR. Large ruffled blooms of pure deep rose-pink on tall spikes. A grand cut flower variety and in great demand. Each, 10c; doz., \$1.00; per 100, \$7.00.

EVELYN KIRTLAND. Beautiful rose-pink, darker at the edges with brilliant blotches on lower petals. Each, 10c; doz., \$1.00; per 100, \$7.00.

FLORA. Golden yellow, large flowers of good substance; one of the best yellows. Each, 12c; doz., \$1.25; per 100, \$8.00.

GIANT NYMPH. Light rose-pink with creamy yellow throat; very large wide-open flowers well arranged on extra long spikes. A real beauty and a great cut flower variety. Each, 15c; doz., \$1.75.

GLORY OF KENNERLAND. Beautiful rose color with purple blotch on yellow ground, a lovely color combination. Each, 10c; doz., 90c; per 100, \$6.00.

GOLDEN MEASURE. Large golden yellow with no other markings. Considered by most gladiolus growers as the best yellow variety. Large flowers on tall spikes; a grand exhibition variety. Each, 15c; doz., \$1.50; per 100, \$10.00.

HALEY. A very early salmon-pink; very popular. Each, 7c; doz., 75c; per 100, \$5.00.

HERADA. Large pure mauve flowers, deeper in throat; a great favorite. Each, 10c; doz., \$1.00; per 100, \$7.00.

JOE COLEMAN. Beautiful large ruffled flowers of a rich red color. A very fine variety of pleasing qualities and always satisfactory. Each, 15c; doz., \$1.25; per 100, \$8.00.

LE MARECHAL FOCH. The favorite pale pink variety. Flowers are extra large and very early. Each, 5c; doz., 60c; per 100, \$4.00.

L'IMMACULEE. Pure white flowers on graceful spikes. One of the best white varieties. Each, 10c; doz., \$1.00; per 100, \$7.00.

LOUISE. Beautiful lavender, throat shaded darker, large flowers. The queen of the lavenders. Each, 12c; doz., \$1.25; per 100, \$8.00.

MISS HELEN FRANKLIN. Ruffled white with violet stripes on lower petals. Many flowers open at one time. Each, 10c; doz., 90c; per 100, \$6.00.

MRS. DR. NORTON. Silvery white blooms with pink edges, throat cream yellow dotted Tyrian rose. A beautiful color combination. Each, 10c; doz., \$1.00; per 100, \$7.00.

MRS. LEON DOUGLAS. Fine salmon-pink striped with flame scarlet, lower petals pale lemon slightly speckled ruby-red. The flowers, we believe, are the largest in existence, and all are wide open and beautifully arranged on long stems. It is a grand exhibition variety and one which everyone raves over. Each, 25c; doz., \$2.75.

MRS. F. C. PETERS. Rich rose-lavender with purplish blotch in throat. Many large flowers open at once and perfectly placed on long stems. A mighty fine glad indeed. Each, 20c; doz., \$2.00.

MRS. FRANCIS KING. Brilliant light red, large flowers on extra long spikes; very popular. Each, 5c; doz., 60c; per 100, \$4.00.

MRS. FRANK PENDLETON. Salmon-pink with rich carmine-red blotch in throat; a great favorite. Each, 10c; doz., 90c; per 100, \$6.00.

MRS. H. E. BOTHIN. Light geranium pink with rich red center. Beautifully ruffled. A great show variety. Each, 15c; doz., \$1.50; per 100, \$10.00.

MRS. WATT. Beautiful clear wine red. Each, 10c; doz., \$1.00; per 100, \$7.00.

NIAGARA. A delightful cream shade blending to canary yellow, throat splashed with red. Each, 10c; doz., \$1.00; per 100, \$7.00.

PANAMA. Beautiful deep pink, large flowers; one of the best dark pinks. Each, 7c; doz., 75c; per 100, \$5.00.

PEACE. Large white flowers with pale violet markings on lower petals; tall graceful spikes. Each, 7c; doz., 75c; per 100, \$5.00.

PERSIA. Very dark velvety maroon-red, almost black; very beautiful indeed. Each, 25c; doz., \$2.75; per 100, \$20.00.

GLADIOLI—Continued.

- PINK PERFECTION.** Delicate apple-blossom pink. Each, 12c; doz., \$1.25; per 100, \$9.00.
- PINK WONDER.** Enormous pale pink flowers shading light yellow at base of lower petals. Blooms are 6 inches in diameter. A grand exhibition variety. Each, 15c; doz., \$1.50; per 100, \$10.00.
- PRINCE OF WALES.** Beautiful light orange flowers of good size. Very early. Each, 10c; doz., \$1.00; per 100, \$6.00.
- PURPLE GLORY.** Here is a glad that people have been talking about ever since the time it was put on the market by Mr. Kunderd. A wonderful flower of deep velvety maroon red with almost black blotches which seem to be burned into the petals. Beautiful ruffled flowers on tall spikes. Do not fail to plant a few in your garden. (Color is not purple as name would indicate). Each, 20c; doz., \$2.00; per 100, \$15.00.
- ROMANCE.** Large flowers of orange-salmon tinged with rose and wine-blue bordered; red and yellow throat. Unusually distinct and very showy. Each, 15c; doz., \$1.60; per 100, \$12.00.
- ROSE ASH.** Corinthian red shading to ashes of roses color on the outer edges; lower petals light yellow streaked with ruby. A very beautiful show variety. Each, 12c; doz., \$1.30; per 100, \$10.00.
- ROSE GLORY.** A very large and beautiful ruffled variety; pure rose-pink color, deeper in throat. Has many awards to its credit. Extra fine. Each, 12c; doz., \$1.30; per 100, \$10.00.
- RUFFLED GLORY.** Salmon-pink with crimson stripe in center of each lower petal. Each petal is exquisitely ruffled. Each, 12c; doz., \$1.25; per 100, \$9.00.
- SCHWABEN.** Clear canary yellow shading to soft sulphur yellow; small brownish red spot in throat. An old timer but still a favorite. Each, 7c; doz., 75c; 100, \$5.00.
- WAR.** Deep brilliant blood red, large flowers. A great favorite among the large reds. Each, 12c; doz., \$1.25; per 100, \$9.00.
- WHITE GIANT.** Extra large pure white flowers on long stems. Petals are somewhat pointed which makes the flowers look like Easter Lilies. Very fine. Each, 20c; doz., \$2.00; per 100, \$14.00.
- WILBRINCK.** Pale pink, lower petals have purplish stripes on a yellowish ground; very early. Each, 7c; doz., 75c; per 100, \$5.00.
- STANDARD MIXED.** This mixture contains many beautiful varieties of different shades and markings. Each, 5c; doz., 60c; per 100, \$3.50.

SPECIAL GLADIOLUS COLLECTION ON
BACK COVER

CALADIUM or Elephant's Ear

A very fine tropical plant for setting out on the lawn either singly or in beds. May be planted in combination with cannas. They have large leaves, sometimes 4 feet long and equally as wide, height about 5 feet. Plant outdoors when danger of frost is over or start early indoors in pots and set out when weather is warm and settled. 20c each; \$2.00 per dozen.

TUBEROSES

The tuberose is one of the most delightfully fragrant summer flowers. It gives best in hot weather and it should not be planted outdoors until it is warm and settled. Can be started indoors in pots in March and April. 7c each; 75c per dozen.

CANNAS

Large flowering varieties. The bulbs we offer are large, strong, and healthy. Have a splendid choice of varieties. Be sure to name variety wanted when ordering.

- EUREKA.** Height 4 feet. Green foliage; flowers creamy white, changing to pure white as they open.
- HUNGARIA.** Height 3½ feet. Green foliage; flowers of the purest La France pink. One of the best pink bedders.
- THE PRESIDENT.** Height 4 feet. Green foliage; flowers of immense size and a rich dazzling red.
- RICHARD WALLACE.** Height 4½ feet. Green foliage; flowers a rich canary yellow and borne well above the foliage. A favorite among the yellow sorts.
- KING HUMBERT.** Height 4 feet. Bronzy foliage; large flowers of rich scarlet. The favorite among the bronzy leaved cannas.
- YELLOW KING HUMBERT.** Height 5 feet. Green foliage; large flowers of a deep rich yellow, spotted with bright red blotches.

Your choice of any variety, 15c each; \$1.50 per dozen.

We also handle a full line of Sprayers and Spraying Material. If in the market for any of these goods we will be glad to quote you our best prices.

STIM-U-PLANT

Plant Stimulant Tablets

THE IDEAL YEAR-ROUND FEEDING METHOD

These tablets are rich in plant food, containing 11 per cent Nitrogen, 12 per cent Phosphoric Acid and 15 per cent Potash. They keep well, are odorless and clean. Compare this analysis with that of any other fertilizer.

Plants in pots, especially when growing vigorously, soon use up the nourishment that is in the soil, therefore to keep your plants healthy, feed them about every ten days or two weeks and avoid the error of feeding too much at one time.

Have Stim-U-Plant Tablets on hand so you can apply them to your outside plants as soon as they start growth and note the amazing results.

Fine for all kinds of vegetables, flowers, bulbs and shrubs. They are a proven success with rose growers, nurserymen, landscape gardeners, strawberry growers and market gardeners. Complete directions with every package. Easy to use. Simply insert in soil near plants, or dissolve in water at the rate of four tablets to the gallon and apply as liquid manure. Price, 30 tablets, 25c; 100 tablets, 75c; 1000 tablets, \$3.50.

FERTILIZERS

- VIGORO.** 100-lb. bag, \$5.00; 50-lb. bag, \$3.00; 25-lb. bag, \$1.75; 5-lb. pkg., 50c.
- BONE MEAL.** 100-lb. bag, \$3.50; 50-lb. bag, \$2.00; 25-lb. bag, \$1.00; 5-lb. pkg., 35c.
- SHEEP MANURE.** 100-lb. bag, \$2.50; 50-lb. bag, \$1.50; 25-lb. bag, 80c; 5-lb. pkg., 35c.
- NITRATE OF SODA.** Per lb., 10c.
- SULPHATE OF AMMONIA.** Per lb., 10c.
- LIME** for sweetening the soil. 10-lb. pkg., 25c; 50-lb. bag, 75c.

LAWN GRASS

We use only the best grades of grass seeds and white clover. Specially selected for purity and high germination; all solid seed, no chaff. Do not waste time and money by sowing cheap grass seed which is mostly chaff. Sow our fancy mixed lawn grass seed and you will have a beautiful lawn. One pound will sow about 250 square feet.

- FANCY MIXED LAWN SEED.** Lb., 50c; 5 lbs. and over, 45c per lb.
- SHADY LAWN GRASS SEED.** Best for shady places under trees and close to the house. Lb., 50c.
- GRADE B MIXTURE.** This is an inexpensive mixture of very good quality for temporary lawns or parkways subject to hard use and where seeding is necessary every year. Lb., 30c; 5 lbs. and over, 25c per lb.
- WHITE DUTCH CLOVER.** Lb., 75c.
- KENTUCKY BLUE GRASS.** Lb., 50c.
- RED TOP (Solid Seed).** Lb., 40c.
- RYE GRASS.** Lb., 30c.
- ORCHARD GRASS.** Lb., 40c.
- CHEWINGS FESCUE.** Lb., 60c.
- CREEPING BENT.** Lb., \$1.50.



Lawn Grown From Our Seed.

Special Gladiolus Collection

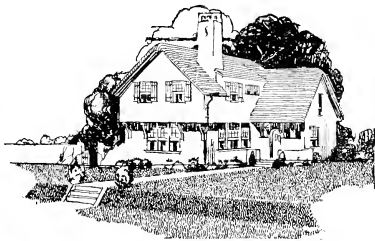
25 Bulbs for

\$1.⁰⁰



*25 Large Size Bulbs
in ten different colors
for \$1.00*

This is a very fine selection and will give you an abundance of bloom. You cannot afford to be without this collection at this very special low price.



Our Customers Speak Highly of VIGORO

Our customers continually tell us of the wonderful results that they secure through the use of VIGORO on lawns, gardens, flowers, shrubbery, and trees.

VIGORO is specially prepared to supply growing things with all of the plant food elements needed for rapid, luxuriant growth.

VIGORO is odorless, clean and easy to apply. It can be sown by hand like grass seed.

100-pound bag \$5.00
50-pound bag 3.00

25-pound bag \$1.75
5-pound pkg. .50

A SWIFT & COMPANY PRODUCT

VIGORO
Specially prepared plant food